

Basic Information

Product Name	Anti-CALCA Antibody
Gene Name	CALCA
Source	Rabbit
Clonality	Polyclonal
Isotype	IgG
Species Reactivity	human
Tested Application	IHC
Contents	500 ug/ml antibody with PBS, 0.02% NaN3, 1 mg/ml BSA and 50% glycerol.
Immunogen	A synthetic peptide corresponding to a sequence at the C-terminus of human Calcitonin different from the related mouse and rat sequences by four amino acids.
Concentration	500 ug/ml
Purification	Immunogen affinity purified.
Dilution Ratios	Immunohistochemistry (IHC): 1:50-400 (Boiling the paraffin sections in 10mM citrate buffer, pH6.0, or PH8.0 EDTA repair liquid for 20 mins is required for the staining of formalin/paraffin sections.) Optimal working dilutions must be determined by end user.

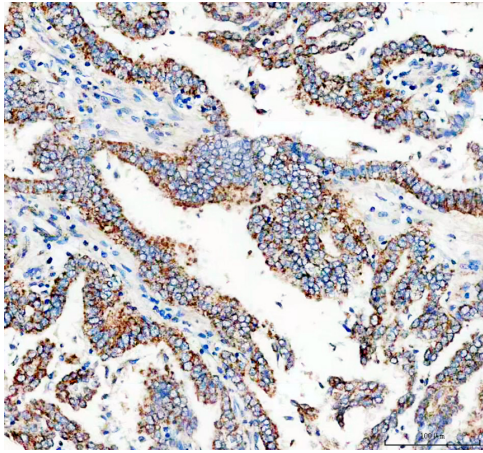
Storage

12 months from date of receipt, -20°C as supplied.

Background Information

Calcitonin, also known as CALCA, is a peptide hormone synthesized by the parafollicular cells of the thyroid. It is mapped to 11p15.2. Calcitonin belongs to the calcitonin-like protein family. Calcitonin is involved in calcium regulation and acts to regulate phosphorus metabolism. Calcitonin gene-related peptide functions as a vasodilator and as an antimicrobial peptide while katacalcin is a calcium-lowering peptide. Multiple transcript variants encoding different isoforms have been found for this gene.

Selected Validation Data



IHC analysis of CALCA using anti-CALCA antibody (PB0966).

CALCA was detected in a paraffin-embedded section of human lung cancer tissue. The tissue section was incubated with rabbit anti-CALCA Antibody (PB0966) at a dilution of 1:200 and developed using HRP Conjugated Rabbit IgG Super Vision Assay Kit (Catalog # SV0002) with DAB (Catalog # AR1027) as the chromogen.