

## Basic Information

<b>Product Name</b>	Anti-ATG13 Antibody
<b>Gene Name</b>	ATG13
<b>Source</b>	Rabbit
<b>Clonality</b>	Polyclonal
<b>Isotype</b>	IgG
<b>Species Reactivity</b>	human, mouse, rat
<b>Tested Application</b>	WB
<b>Contents</b>	500 ug/ml antibody with PBS, 0.02% NaN <sub>3</sub> , 1 mg/ml BSA and 50% glycerol.
<b>Immunogen</b>	A synthetic peptide corresponding to a sequence at the C-terminus of human KIAA0652 identical to the related mouse sequence.
<b>Concentration</b>	500 ug/ml
<b>Purification</b>	Immunogen affinity purified.
<b>Observed MW</b>	56 kDa
<b>Dilution Ratios</b>	Western blot (WB):1:500-2000

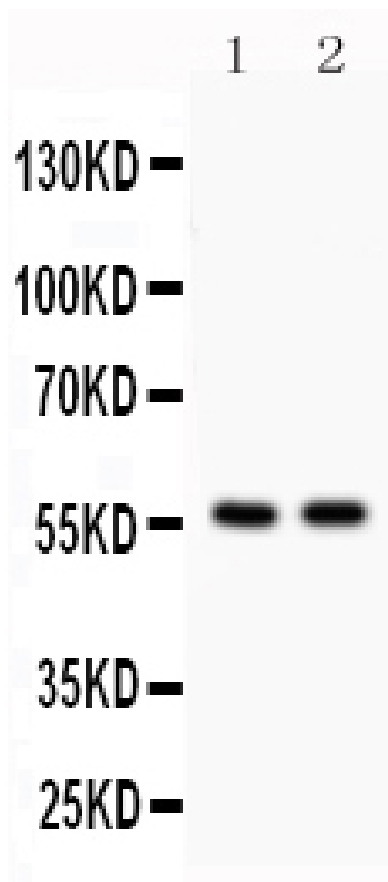
## Storage

12 months from date of receipt, -20°C as supplied.

## Background Information

Autophagy-related protein 13, also known as ATG13, is a protein that in humans is encoded by the KIAA0652 gene. ATG13 is an autophagy factor required for phagosome formation. It is located on 11p11.2. And ATG13 is a target of the TOR kinase signaling pathway that regulates autophagy through phosphorylation of ATG13 and ULK1, and the regulation of the ATG13-ULK1-RB1CC1 complex.

## Selected Validation Data



Western blot analysis of ATG13 using anti-ATG13 antibody (PB0523). The sample well of each lane was loaded with 30 ug of sample under reducing conditions.

Lane 1: HELA whole cell lysates,

Lane 2: HEPA whole cell lysates.

After electrophoresis, proteins were transferred to a membrane.

Then the membrane was incubated with rabbit anti-ATG13 antigen

affinity purified polyclonal antibody (PB0523) at a dilution of 1:1000

and probed with a goat anti-rabbit IgG-HRP secondary antibody

(Catalog # BA1054). The signal is developed using ECL Plus Western

Blotting Substrate (Catalog # AR1197). A specific band was detected

for ATG13 at approximately 56 kDa. The expected band size for

ATG13 is at 57 kDa.