

Basic Information

Product Name	Anti-P62/SQSTM1 Antibody	
Gene Name	SQSTM1	
Source	Rabbit	
Clonality	Polyclonal	
Isotype	IgG	
Species Reactivity	human, mouse, rat, monkey	
Tested Application	WB, IHC, ICC/IF, IF	
Contents	500 ug/ml antibody with PBS, 0.02% NaN ₃ , 1 mg/ml BSA and 50% glycerol.	
Immunogen	A synthetic peptide corresponding to a sequence at the N-terminus of human SQSTM1/p62 identical to the related mouse and rat sequences.	
Concentration	500 ug/ml	
Purification	Immunogen affinity purified.	
Observed MW	62 kDa	
Dilution Ratios	Western blot (WB): 1:1000-5000 Immunohistochemistry (IHC): 1:50-400 Immunocytochemistry/Immunofluorescence (ICC/IF): 1:50-400 Immunofluorescence (IF): 1:50-400 (Boiling the paraffin sections in 10mM citrate buffer,pH6.0,or PH8.0 EDTA repair liquid for 20 mins is required for the staining of formalin/paraffin sections.) Optimal working dilutions must be determined by end user.	

Storage

12 months from date of receipt, -20°C as supplied.

Background Information

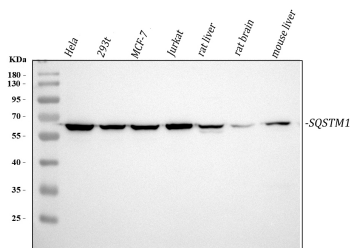
SQSTM1(Sequestosome-1), also known as Ubiquitin-Binding Protein P62 or P62, is a protein that in humans is encoded by the SQSTM1 gene. The Src homology type 2 (SH2) domain is a highly conserved motif of about 100 amino acids which mediates protein-protein interactions by binding to phosphotyrosine.p56-lck, a T-cell-specific src family tyrosine kinase with an SH2 domain, is involved in T-cell signal transduction. The International Radiation Hybrid Mapping Consortium mapped the p62 gene to chromosome 5q35. Park et al. (1995) found that the p56-lck SH2 domain binds to p62 at the ser59 of p62 only when that serine is phosphorylated. Jung et al. (1996) expressed epitope-tagged p62 in

Hela cells and showed that the expressed protein bound to the Ick SH2 domain and that this binding was dependent on the N-terminal 50 amino acids of p62 but not on the tyrosine residue in this region.

Reference

Anti-P62/SQSTM1 Antibody被引用在32文献中。

Selected Validation Data



Western blot analysis of anti-P62/SQSTM1 antibody (PB0458). The sample well of each lane was loaded with 30 ug of sample under reducing conditions.

Lane 1: human Hela whole cell lysates,

Lane 2: human 293T whole cell lysates,

Lane 3: human MCF-7 whole cell lysates,

Lane 4: human Jurkat whole cell lysates,

Lane 5: rat liver tissue lysates,

Lane 6: rat brain tissue lysates,

Lane 7: mouse liver tissue lysates.

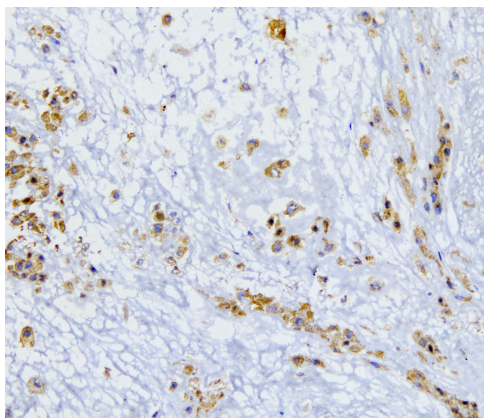
After electrophoresis, proteins were transferred to a membrane.

Then the membrane was incubated with rabbit anti-P62/SQSTM1 antigen affinity purified polyclonal antibody (PB0458) and probed

with a goat anti-rabbit IgG-HRP secondary antibody (Catalog # BA1054). The signal is developed using ECL Plus Western Blotting

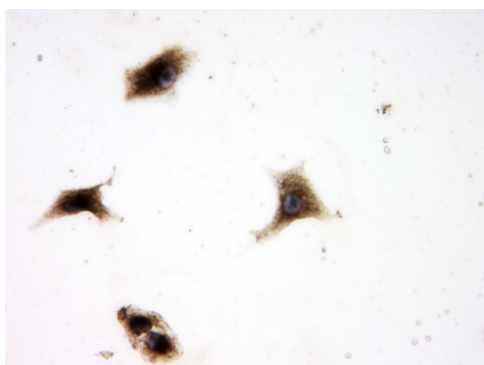
Substrate (Catalog # AR1197). A specific band was detected for P62/SQSTM1 at approximately 62 kDa. The expected band size for

P62/SQSTM1 is at 48 kDa.



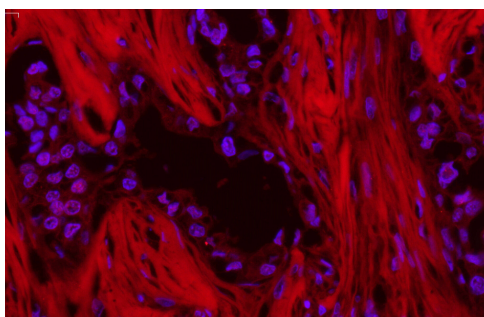
IHC analysis of P62/SQSTM1 using anti-P62/SQSTM1 antibody (PB0458).

P62/SQSTM1 was detected in frozen section of human placenta tissue. Biotinylated goat anti-rabbit IgG was used as secondary antibody. The tissue section was incubated with rabbit anti-P62/SQSTM1 Antibody (PB0458) at a dilution of 1:200 and developed using Streptavidin-Biotin-Complex (SABC) (Catalog # SA1022) with DAB (Catalog # AR1027) as the chromogen.



ICC analysis of P62/SQSTM1 using anti- P62/SQSTM1 antibody (PB0458).

P62/SQSTM1 was detected in an immunocytochemical section of A549 cells. The section was incubated with rabbit anti-P62/SQSTM1 Antibody (PB0458) at a dilution of 1:100. Biotinylated goat anti-rabbit IgG was used as secondary antibody. The section was developed using Streptavidin-Biotin-Complex (SABC)(Catalog # SA1022) with DAB (Catalog # AR1027) as the chromogen.



IF analysis of SQSTM1/p62 using anti- SQSTM1/p62 antibody (PB0458) SQSTM1/p62 was detected in paraffin-embedded section of human lung cancer tissues. Heat mediated antigen retrieval was performed in citrate buffer (pH6, epitope retrieval solution) for 20 mins. The tissue section was blocked with 10% goat serum. The tissue section was then incubated with 1 μ g/mL rabbit anti-SQSTM1/p62 Antibody (PB0458) overnight at 4°C. Cy3 Conjugated Goat Anti-Rabbit IgG (BA1032) was used as secondary antibody at 1:100 dilution and incubated for 30 minutes at 37°C. The section was counterstained with DAPI. Visualize using a fluorescence microscope and filter sets appropriate for the label used.