

Basic Information

Product Name	Anti-IL-1 beta/IL1B Antibody	
Gene Name	IL1B	
Source	Rabbit	
Clonality	Polyclonal	
Isotype	IgG	
Species Reactivity	mouse, rat	
Tested Application	WB, IHC, ELISA	
Contents	500 ug/ml antibody with PBS, 0.02% NaN3, 1 mg/ml BSA and 50% glycerol.	
Immunogen	A synthetic peptide corresponding to a sequence at the C-terminus of rat IL-1 beta different from the related human sequence by five amino acids, and from the related mouse sequence by one amino acid.	
Concentration	500 ug/ml	
Purification	Immunogen affinity purified.	
Observed MW	31-35 kDa	
Dilution Ratios	Western blot (WB):	1:500-2000
	Immunohistochemistry (IHC):	1:50-400
	Enzyme linked immunosorbent assay (ELISA):	1:100-1000
	(Boiling the paraffin sections in 10mM citrate buffer,pH6.0,or PH8.0 EDTA repair liquid for 20 mins is required for the staining of formalin/paraffin sections.) Optimal working dilutions must be determined by end user.	

Storage

12 months from date of receipt, -20°C as supplied.

Background Information

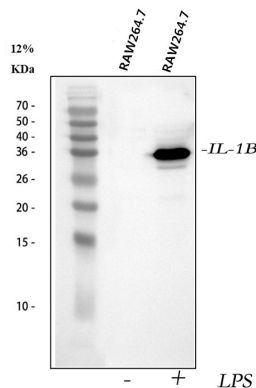
Interleukin-1 β (IL-1 β) is a potent stimulator of bone resorption whose gene is mapped to 2q14, and has been implicated in the pathogenesis of high bone turnover and osteoporosis. IL-1 β , a prominent microglia-derived cytokine, caused oligodendrocyte death in coculture with astrocytes and microglia, but not in pure culture of oligodendrocytes alone. It also can cause nuclear export of a specific NCOR corepressor complex, resulting in derepression of a specific subset of nuclear factor-kappa-B (NF κ B)-regulated genes. Furthermore, Microenvironmental IL-1 β and, to a lesser extent, IL-1 α

are required for in vivo angiogenesis and invasiveness of different tumor cells. Additionally, the cooperation of IL-1 β and PDGFB induces contractile-to-synthetic phenotype modulation of human aortic smooth muscle cells in culture. Moreover, the association with disease may be explained by the biologic properties of IL-1 β , which is an important proinflammatory cytokine and a powerful inhibitor of gastric acid secretion.

Reference

Anti-IL-1 beta/IL1B Antibody被引用在16文献中。

Selected Validation Data



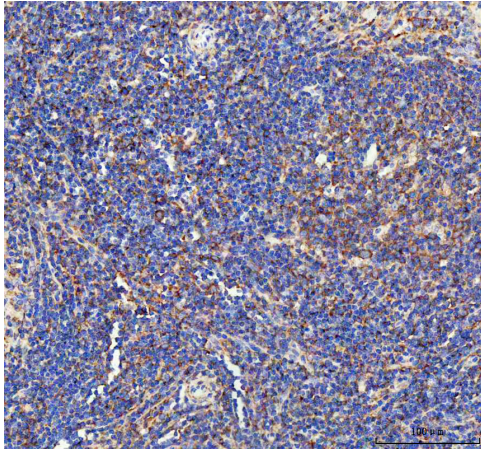
Western blot analysis of IL-1 beta/IL1B using anti-IL-1 beta/IL1B antibody (PB0055). The sample well of each lane was loaded with 30 ug of sample under reducing conditions.

Lane 1: mouse RAW264.7 whole cell lysates,

Lane 2: mouse RAW264.7 whole cell lysates.

After electrophoresis, proteins were transferred to a membrane.

Then the membrane was incubated with rabbit anti-IL-1 beta/IL1B antigen affinity purified polyclonal antibody (PB0055) at a dilution of 1:1000 and probed with a goat anti-rabbit IgG-HRP secondary antibody (Catalog # BA1054). The signal is developed using ECL Plus Western Blotting Substrate (Catalog # AR1197). A specific band was detected for IL-1 beta/IL1B at approximately 35 kDa. The expected band size for IL-1 beta/IL1B is at 31 kDa.



IHC analysis of IL-1 beta/IL1B using anti-IL-1 beta/IL1B antibody (PB0055) .

IL-1 beta/IL1B was detected in a paraffin-embedded section of mouse spleen tissue. The tissue section was incubated with rabbit anti-IL-1 beta/IL1B Antibody (PB0055) at a dilution of 1:200 and developed using HRP Conjugated Rabbit IgG Super Vision Assay Kit (Catalog # SV0002) with DAB (Catalog # AR1027) as the chromogen.