

Basic Information

Product Name	Anti-GFP Tag Antibody (Clone#8C1)
Source	Mouse
Clonality	Monoclonal
Isotype	IgG1
Species Reactivity	All species
Tested Application	WB, Dot blot, ELISA
Contents	0.5mg/ml in PBS, pH7.4, containing 0.02% Sodium Azide and 50% glycerol.
Immunogen	This antibody is produced by immunizing animals with a synthetic GFP tag peptide corresponding to KLH.
Concentration	0.5mg/ml
Dilution Ratios	Western blot (WB):1:500-5000

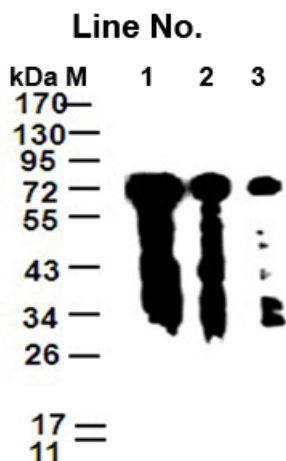
Storage

12 months from date of receipt, -20°C as supplied.

Background Information

Green fluorescent protein is a 27 Kd protein, derived from the bioluminescent jellyfish *Aequorea Victoria*. When expressed in either eukaryotic or prokaryotic cells and illuminated by blue or UV light, GFP yields a bright green fluorescence. Fluorescent proteins and its mutated allelic forms, blue, cyan and yellow have become a useful and ubiquitous tool where they function as a fluorescent protein tag. Many recombinant proteins have been engineered with GFP tags to facilitate the detection, isolation and purification of the proteins.

Selected Validation Data



Western blot analysis of different concentration of Anti-GFP (8C1)

Monoclonal Antibody

Antigen: Extracts from E.coli expressing GFP-tagged protein

Line No.

1: 1 ug/mL

2: 0.5 ug/mL

3: 0.1 ug/mL