

Basic Information

Product Name	Anti-MCM4 Antibody (Clone#24M40)
Gene Name	MCM4
Source	Rabbit
Clonality	Monoclonal
Isotype	IgG
Species Reactivity	human, mouse
Tested Application	WB, IHC, IP, FCM
Contents	500 ug/ml; Rabbit IgG in phosphate buffered saline, pH 7.4, 150mM NaCl, 0.02% sodium azide, 0.4-0.5 mg/ml BSA and 50% glycerol.
Immunogen	A synthesized peptide derived from human MCM4
Concentration	500 ug/ml
Purification	Affinity-chromatography
Observed MW	97 kDa
Dilution Ratios	Western blot (WB): 1:1000-5000 Immunohistochemistry (IHC):1:50-200 ImmunoPrecipitation (IP): 1:50 Flow Cytometry (FCM): 1:100

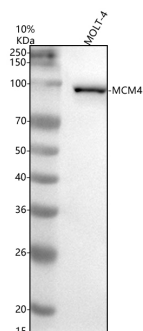
Storage

12 months from date of receipt, -20°C as supplied.

Reference

Anti-MCM4 Antibody (Clone#24M40)被引用在1文献中。

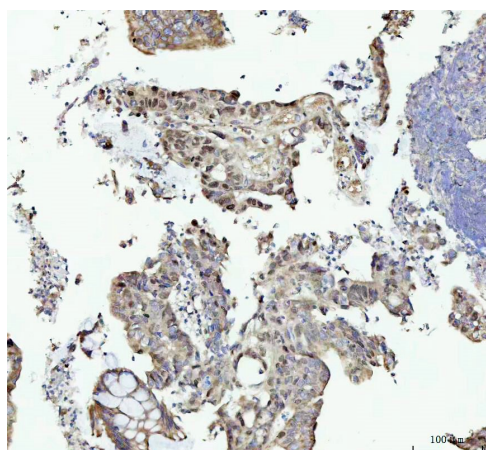
Selected Validation Data



Western blot analysis of anti-MCM4 antibody (M02301). The sample well of each lane was loaded with 30 ug of sample under reducing conditions.

Lane 1: human MOLT-4 whole cell lysates.

After electrophoresis, proteins were transferred to a membrane. Then the membrane was incubated with rabbit anti-MCM4 antigen affinity purified monoclonal antibody (M02301) at a dilution of 1:1000 and probed with a goat anti-rabbit IgG-HRP secondary antibody (Catalog # BA1054). The signal is developed using ECL Plus Western Blotting Substrate (Catalog # AR1197). A specific band was detected for MCM4 at approximately 97 kDa. The expected band size for MCM4 is at 97 kDa.



IHC analysis of MCM4 using anti-MCM4 antibody (M02301) .

MCM4 was detected in a paraffin-embedded section of human colorectal adenocarcinoma tissue. The tissue section was incubated with rabbit anti-MCM4 Antibody (M02301) at a dilution of 1:200 and developed using HRP Conjugated Rabbit IgG Super Vision Assay Kit (Catalog # SV0002) with DAB (Catalog # AR1027) as the chromogen.