

Basic Information

Product Name	Anti-LC3A/MAP1LC3A Antibody (Clone#OTI2D5)
Gene Name	MAP1LC3A
Source	Mouse
Clonality	Monoclonal
Isotype	IgG1
Species Reactivity	human, mouse, rat
Tested Application	WB
Contents	PBS (PH 7.3) containing 1% BSA, 50% glycerol and 0.02% sodium azide.
Immunogen	Full length human recombinant protein of human MAP1LC3A (NP_115903) produced in E.coli.
Concentration	500 ug/ml
Purification	Purified from mouse ascites fluids or tissue culture supernatant by affinity chromatography (protein A/G)
Observed MW	14.1 kDa
Dilution Ratios	Western blot (WB):1:2000

Storage

Stable for 12 months from date of receipt. Store at -20°C as received.

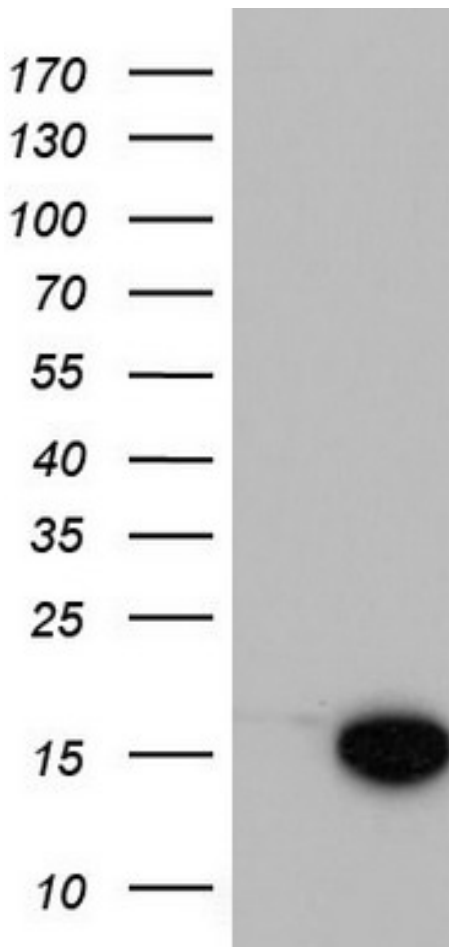
Background Information

MAP1A and MAP1B are microtubule-associated proteins which mediate the physical interactions between microtubules and components of the cytoskeleton. MAP1A and MAP1B each consist of a heavy chain subunit and multiple light chain subunits. The protein encoded by this gene is one of the light chain subunits and can associate with either MAP1A or MAP1B. Two transcript variants encoding different isoforms have been found for this gene. The expression of variant 1 is suppressed in many tumor cell lines, suggesting that may be involved in carcinogenesis. [provided by RefSeq, Feb 2012]

Reference

Anti-LC3A/MAP1LC3A Antibody (Clone#OTI2D5)被引用在1文献中。

Selected Validation Data



HEK293T cells were transfected with the pCMV6-ENTRY control (Left lane) or pCMV6-ENTRY MAP1LC3A (Right lane) cDNA for 48 hrs and lysed. Equivalent amounts of cell lysates (5 ug per lane) were separated by SDS-PAGE and immunoblotted with anti-MAP1LC3A.