

Basic Information

Product Name	Anti-Beta Actin/ACTB Antibody (Clone#17A10)	
Gene Name	ACTB	
Source	Mouse	
Clonality	Monoclonal	
Isotype	IgG1	
Species Reactivity	human, mouse, rat, chicken, rabbit	
Tested Application	WB, IHC, ICC/IF	
Contents	500 ug/ml; Rabbit IgG in phosphate buffered saline, pH 7.4, 150mM NaCl, 0.02% sodium azide, 0.4-0.5 mg/ml BSA and 50% glycerol.	
Immunogen	A synthesized peptide derived from human beta Actin	
Concentration	500 ug/ml	
Purification	Affinity-chromatography	
Observed MW	42 kDa(不适用于心肌样本的检测)	
Dilution Ratios	Western blot (WB):	1:3000-10000
	IHC :	1:100-1:200
	Immunocytochemistry/Immunofluorescence (ICC/IF):	1:100-200

Storage

12 months from date of receipt, -20°C as supplied.

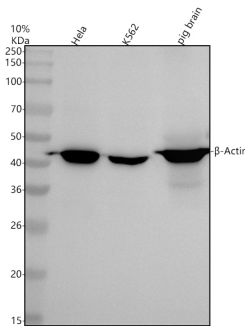
Background Information

The primary site of action of cytochalasin B on cell motility processes is beta-actin. Habets et al.(1992) generated hybrids that harbor only specific regions of human chromosome 7 and assigned the ACTB locus to 7p15-p12. ACTB and the other assigned beta-actin-related sequences are dispersed over at least four different chromosomes including one locus assigned to the X chromosome. A mutation of beta-actin that alters depolymerization dynamics is associated with autosomal dominant developmental malformations, deafness, and dystonia.

Reference

Anti-Beta Actin/ACTB Antibody (Clone#17A10)被引用在63文献中。

Selected Validation Data



Western blot analysis of anti-Beta Actin/ACTB antibody (M01263-4).

The sample well of each lane was loaded with 30 ug of sample under reducing conditions.

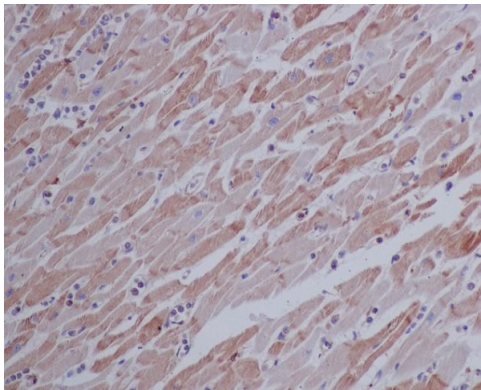
Lane 1: human Hela whole cell lysates,

Lane 2: human K562 whole cell lysates,

Lane 3: pig brain tissue lysates.

After electrophoresis, proteins were transferred to a membrane.

Then the membrane was incubated with mouse anti-Beta Actin/ACTB antigen affinity purified monoclonal antibody (M01263-4) at a dilution of 1:1000 and probed with a goat anti-mouse IgG-HRP secondary antibody (Catalog # BA1050). The signal is developed using ECL Plus Western Blotting Substrate (Catalog # AR1197). A specific band was detected for Beta Actin/ACTB at approximately 42 kDa. The expected band size for Beta Actin/ACTB is at 42 kDa.



Immunohistochemical analysis of paraffin-embedded human heart, using beta Actin Mouse Monoclonal Antibody.

Product datasheet

**Anti-Beta Actin/ACTB Antibody
(Clone#17A10)**

Catalog Number: M01263-4

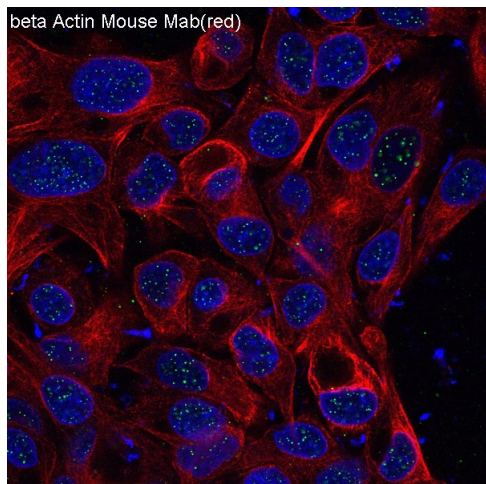
BOSTER[®]

antibody and ELISA experts

BOSTER BIOLOGICAL TECHNOLOGY

Building C21, 3rd to 5th Floors, Optics Valley Biopharmaceutical Accelerator,
East Lake High-Tech Development Zone, Wuhan.

Web: www.boster.com **Phone:** 027-67845390/1/2 **Email:** boster@boster.com



Immunofluorescent analysis of HepG2 cells, using beta Actin mAb.