

Basic Information

Product Name	Anti-4EBP1/EIF4EBP1(Phospho-T70) Antibody (Clone#32E48)
Gene Name	EIF4EBP1
Source	Rabbit
Clonality	Monoclonal
Isotype	IgG
Species Reactivity	human
Tested Application	WB
Contents	500 ug/ml; Rabbit IgG in phosphate buffered saline, pH 7.4, 150mM NaCl, 0.02% sodium azide, 0.4-0.5 mg/ml BSA and 50% glycerol.
Immunogen	A synthesized peptide derived from human Phospho-eIF4EBP1 (T70)
Concentration	500 ug/ml
Purification	Affinity-chromatography
Observed MW	17 kDa
Dilution Ratios	Western blot (WB):1:500-2000

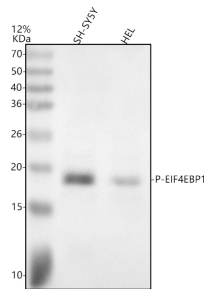
Storage

12 months from date of receipt, -20°C as supplied.

Reference

Anti-4EBP1/EIF4EBP1(Phospho-T70) Antibody (Clone#32E48)被引用在1文献中。

Selected Validation Data



Western blot analysis of anti-P-EIF4EBP1 antibody (M00968T70). The sample well of each lane was loaded with 30 ug of sample under reducing conditions.

Lane 1: human SH-SY5Y whole cell lysates,

Lane 2: human HEL whole cell lysates.

After electrophoresis, proteins were transferred to a membrane. Then the membrane was incubated with rabbit anti-P-EIF4EBP1 antigen affinity purified monoclonal antibody (M00968T70) at a dilution of 1:1000 and probed with a goat anti-rabbit IgG-HRP secondary antibody (Catalog # BA1054). The signal is developed using ECL Plus Western Blotting Substrate (Catalog # AR1197). A specific band was detected for P-EIF4EBP1 at approximately 17 kDa. The expected band size for P-EIF4EBP1 is at 17 kDa.