

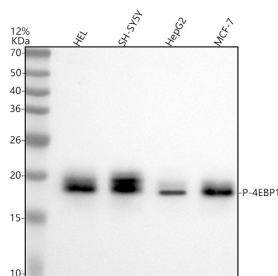
## Basic Information

Product Name	Anti-4EBP1/EIF4EBP1/2/3(Phospho-T46/T46/T32) Antibody (Clone#32E52)		
Gene Name	EIF4EBP1/EIF4EBP2/EIF4EBP3		
Source	Rabbit		
Clonality	Monoclonal		
Isotype	IgG		
Species Reactivity	human, mouse		
Tested Application	WB, IHC		
Contents	500 ug/ml; Rabbit IgG in phosphate buffered saline, pH 7.4, 150mM NaCl, 0.02% sodium azide, 0.4-0.5 mg/ml BSA and 50% glycerol.		
Immunogen	A synthesized peptide derived from human Phospho-eIF4EBP1/2/3 (T46+T46+T32)		
Concentration	500 ug/ml		
Purification	Affinity-chromatography		
Observed MW	18 kDa		
Dilution Ratios	Western blot (WB): 1:500-2000 Immunohistochemistry (IHC):1:50-200		

## Storage

12 months from date of receipt, -20°C as supplied.

## Selected Validation Data



Western blot analysis of anti-4EBP1/EIF4EBP1/2/3(Phospho-T46/T46/T32) antibody (M00968T46T32). The sample well of each lane was loaded with 30 ug of sample under reducing conditions.

Lane 1: human HEL whole cell lysates,

Lane 2: human SH-SY5Y whole cell lysates,

Lane 3: human HepG2 whole cell lysates,

Lane 4: human MCF-7 whole cell lysates.

After electrophoresis, proteins were transferred to a membrane.

Then the membrane was incubated with rabbit

anti-4EBP1/EIF4EBP1/2/3(Phospho-T46/T46/T32) antigen affinity

purified monoclonal antibody (M00968T46T32) at a dilution of

1:1000 and probed with a goat anti-rabbit IgG-HRP secondary

antibody (Catalog # BA1054). The signal is developed using ECL Plus

Western Blotting Substrate (Catalog # AR1197). A specific band was

detected for 4EBP1/EIF4EBP1/2/3(Phospho-T46/T46/T32) at

approximately 18 kDa. The expected band size for

4EBP1/EIF4EBP1/2/3(Phospho-T46/T46/T32) is at 18 kDa.