

Basic Information

Product Name	Anti-Cyclin E1/CCNE1 Antibody (Clone#8B9C3)
Gene Name	CCNE1
Source	Mouse
Clonality	Monoclonal
Isotype	IgG2b
Species Reactivity	human
Tested Application	WB
Contents	500 ug/ml antibody with PBS, 0.02% NaN3, 1 mg/ml BSA and 50% glycerol.
Immunogen	E.coli-derived human Cyclin E1/CCNE1 recombinant protein (Position: R3-A386).
Concentration	500 ug/ml
Purification	protein G/A purified
Observed MW	47 kDa
Dilution Ratios	Western blot (WB):1:500-2000

Storage

12 months from date of receipt, -20°C as supplied.

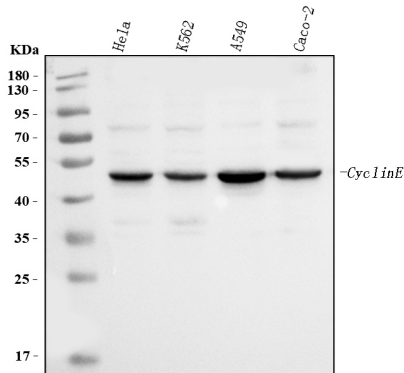
Background Information

G1/S-specific cyclin-E1 is a protein that in humans is encoded by the CCNE1 gene. It is mapped to 19q12. The protein encoded by this gene belongs to the highly conserved cyclin family, whose members are characterized by a dramatic periodicity in protein abundance through the cell cycle. Cyclins function as regulators of CDK kinases. Different cyclins exhibit distinct expression and degradation patterns which contribute to the temporal coordination of each mitotic event. This cyclin forms a complex with and functions as a regulatory subunit of CDK2, whose activity is required for cell cycle G1/S transition. This protein accumulates at the G1-S phase boundary and is degraded as cells progress through S phase. Overexpression of this gene has been observed in many tumors, which results in chromosome instability, and thus may contribute to tumorigenesis. This protein was found to associate with, and be involved in, the phosphorylation of NPAT protein (nuclear protein mapped to the ATM locus), which participates in cell-cycle regulated histone gene expression and plays a critical role in promoting cell-cycle progression in the absence of pRB.

Reference

Anti-Cyclin E1/CCNE1 Antibody (Clone#8B9C3)被引用在1文献中。

Selected Validation Data



Western blot analysis of Cyclin E1/CCNE1 using anti-Cyclin E1/CCNE1 antibody (M00543-3). The sample well of each lane was loaded with 30 ug of sample under reducing conditions.

Lane 1: HeLa whole cell lysates,
Lane 2: K562 whole cell lysates,
Lane 3: A549 whole cell lysates,
Lane 4: Caco-2 whole cell lysates.

After electrophoresis, proteins were transferred to a membrane. Then the membrane was incubated with mouse anti-Cyclin E1/CCNE1 antigen affinity purified monoclonal antibody (M00543-3) at a dilution of 1:1000 and probed with a goat anti-mouse IgG-HRP secondary antibody (Catalog # BA1050). The signal is developed using ECL Plus Western Blotting Substrate (Catalog # AR1197). A specific band was detected for Cyclin E1/CCNE1 at approximately 47 kDa. The expected band size for Cyclin E1/CCNE1 is at 47 kDa.