

## Basic Information

Product Name	Anti-Lamin A/C Antibody (Clone#22L53)		
Gene Name	LMNA		
Source	Rabbit		
Clonality	Monoclonal		
Isotype	IgG		
Species Reactivity	human, mouse, rat		
Tested Application	WB, IHC, ICC/IF, FCM		
Contents	500 ug/ml; Rabbit IgG in phosphate buffered saline, pH 7.4, 150mM NaCl, 0.02% sodium azide, 0.4-0.5 mg/ml BSA and 50% glycerol.		
Immunogen	A synthesized peptide derived from human Lamin A/C		
Concentration	500 ug/ml		
Purification	Affinity-chromatography		
Observed MW	74 kDa		
Dilution Ratios	Western blot (WB):	1:500-2000	
	Immunohistochemistry (IHC):	1:50-200	
	Immunocytochemistry/Immunofluorescence (ICC/IF):	1:50-200	
	Flow Cytometry (FCM):	1:50	

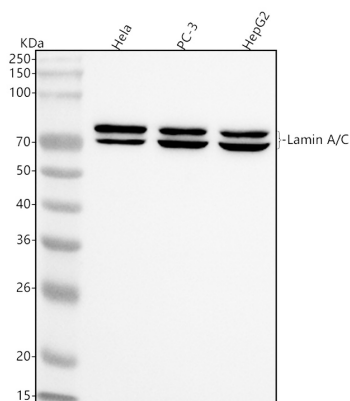
## Storage

12 months from date of receipt, -20°C as supplied.

## Reference

Anti-Lamin A/C Antibody (Clone#22L53)被引用在5文献中。

## Selected Validation Data



Western blot analysis of anti-Lamin A/C antibody (M00438-5). The sample well of each lane was loaded with 30 ug of sample under reducing conditions.

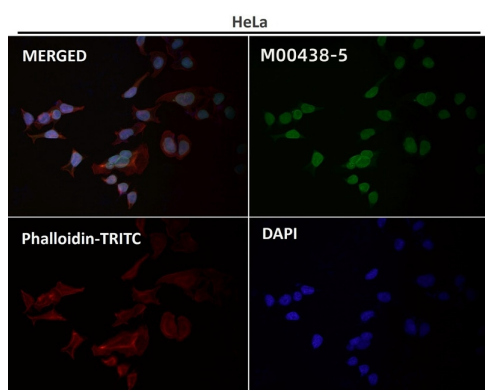
Lane 1: human HeLa whole cell lysates,

Lane 2: human PC-3 whole cell lysates,

Lane 3: human HepG2 whole cell lysates.

After electrophoresis, proteins were transferred to a membrane.

Then the membrane was incubated with rabbit anti-Lamin A/C antigen affinity purified monoclonal antibody (M00438-5) at a dilution of 1:1000 and probed with a goat anti-rabbit IgG-HRP secondary antibody (Catalog # BA1054). The signal is developed using ECL Plus Western Blotting Substrate (Catalog # AR1197). A specific band was detected for Lamin A/C at approximately 70-74 kDa. The expected band size for Lamin A/C is at 74 kDa.



Immunofluorescent analysis using the Antibody.