

Basic Information

| | |
|---------------------------|---|
| Product Name | Anti-IL-1 beta/IL1B Antibody (Clone#28I10) |
| Gene Name | Il1b |
| Source | Rabbit |
| Clonality | Monoclonal |
| Isotype | IgG |
| Species Reactivity | mouse, rat |
| Tested Application | WB, IP, FCM |
| Contents | 500 ug/ml; Rabbit IgG in phosphate buffered saline, pH 7.4, 150mM NaCl, 0.02% sodium azide, 0.4-0.5 mg/ml BSA and 50% glycerol. |
| Immunogen | A synthesized peptide derived from human IL-1 beta |
| Concentration | 500 ug/ml |
| Purification | Affinity-chromatography |
| Observed MW | 17 kDa |
| Dilution Ratios | Western blot (WB): 1:500-2000 ImmunoPrecipitation (IP):1:50 Flow Cytometry (FCM): 1:50 |

Storage

12 months from date of receipt, -20°C as supplied.

Background Information

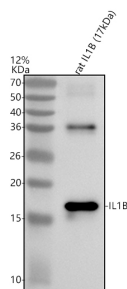
Interleukin-1 β (IL-1 β) is a potent stimulator of bone resorption whose gene is mapped to 2q14, and has been implicated in the pathogenesis of high bone turnover and osteoporosis. IL-1 β , a prominent microglia-derived cytokine, caused oligodendrocyte death in coculture with astrocytes and microglia, but not in pure culture of oligodendrocytes alone. It also can cause nuclear export of a specific NCOR corepressor complex, resulting in derepression of a specific subset of nuclear factor-kappa-B (NF κ B)-regulated genes. Furthermore, Microenvironmental IL-1 β and, to a lesser extent, IL-1 α are required for in vivo angiogenesis and invasiveness of different tumor cells. Additionally, the cooperation of IL-1 β and PDGFB induces contractile-to-synthetic phenotype modulation of human aortic smooth muscle cells in culture. Moreover, the association with disease may be explained by the biologic properties of IL-1 β , which is an important

proinflammatory cytokine and a powerful inhibitor of gastric acid secretion.

Reference

Anti-IL-1 beta/IL1B Antibody (Clone#28I10)被引用在7文献中。

Selected Validation Data



Western blot analysis of IL1B using anti-IL1B antibody (M00101-3).
Lane 1: recombinant rat IL1B protein.

After electrophoresis, proteins were transferred to a membrane.
Then the membrane was incubated with rabbit anti-IL1B antigen
affinity purified monoclonal antibody (M00101-3) at a dilution of
1:1000 and probed with a goat anti-rabbit IgG-HRP secondary
antibody (Catalog # BA1054). The signal is developed using ECL Plus
Western Blotting Substrate (Catalog # AR1197). A specific band was
detected for IL1B at approximately 17 kDa.