

Basic Information

Product Name	Anti-Myc Tag Antibody (Clone#10D11)
Source	Mouse
Clonality	Monoclonal
Isotype	IgG1
Species Reactivity	All species
Tested Application	WB, Dot blot, ELISA
Contents	500ug/ml antibody with PBS , 0.02% NaN ₃ , 1mg BSA and 50% glycerol.
Immunogen	This antibody is produced by immunizing animals with a synthetic Myc tag peptide corresponding to KLH.
Concentration	0.5mg/ml
Observed MW	47 kDa
Dilution Ratios	Western blot (WB):1:500-5000

Storage

12 months from date of receipt, -20°C as supplied.

Background Information

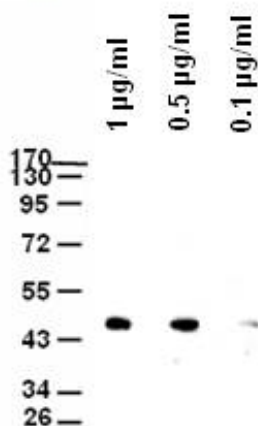
A Myc tag is a polypeptide protein tag derived from the c-myc gene product that can be added to a protein using recombinant DNA technology, The myc tag antibody can be used in detecting the recombinant protein with a myc tag for many purposes, for example cellular localization studies by immunofluorescence or detection by Western blotting.

Reference

Anti-Myc Tag Antibody (Clone#10D11)被引用在1文献中。

Selected Validation Data

Anti-Myc Monoclonal Antibody



Western blot analysis of different concentration of Anti-Myc Tag(10D11) Monoclonal Antibody (M00026-2)

Blocking: Incubate the membrane with 5% Non-Fat Milk, 1PBS, 4 overnight

Antibody Incubation: Diluted antibody in 5% Non-Fat Milk, 1TBS, 0.1% Tween-20, RT, 30mins