

## Basic Information

<b>Product Name</b>	Anti-Beclin 1/BECN1 Antibody (Clone#ADA-2)	
<b>Gene Name</b>	BECN1	
<b>Source</b>	Rabbit	
<b>Clonality</b>	Monoclonal	
<b>Isotype</b>	IgG	
<b>Species Reactivity</b>	human, mouse, rat	
<b>Tested Application</b>	WB, IHC, ICC/IF	
<b>Contents</b>	500 ug/ml; Rabbit IgG in phosphate buffered saline, pH 7.4, 150mM NaCl, 0.02% sodium azide, 0.4-0.5 mg/ml BSA and 50% glycerol.	
<b>Immunogen</b>	A synthesized peptide derived from human Beclin 1	
<b>Concentration</b>	500 ug/ml	
<b>Purification</b>	Affinity-chromatography	
<b>Observed MW</b>	52-60 kDa	
<b>Dilution Ratios</b>	Western blot (WB):	1:500-2000
	Immunohistochemistry (IHC):	1:50-200
	Immunocytochemistry/Immunofluorescence (ICC/IF):	1:50-200

## Storage

12 months from date of receipt, -20°C as supplied.

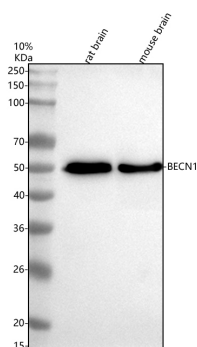
## Background Information

Beclin-1, also known as also known as ATG6 or VPS30 is a protein that in humans is encoded by the BECN1 gene. Beclin-1 and its binding partner class III phosphoinositide 3-kinase (PI3K), also named Vps34, are required for the initiation of the formation of the autophagosome in autophagy. This gene participates in the regulation of autophagy and has an important role in development, tumorigenesis, and neurodegeneration. Schizophrenia is associated with low levels of Beclin-1 in the hippocampus of the affected which causes diminished autophagy which in turn results in increased neuronal cell death. It has been found that beclin-1 can promote autophagy in autophagy-defective yeast with a targeted disruption of *apg6/vps30*, and in human MCF7 breast carcinoma cells.

## Reference

Anti-Beclin 1/BECN1 Antibody (Clone#ADA-2)被引用在4文献中。

## Selected Validation Data

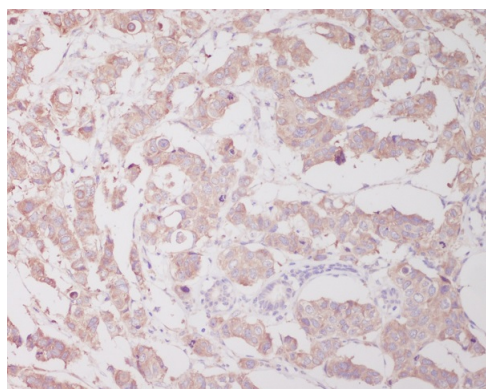


Western blot analysis of anti-Beclin 1/BECN1 antibody (BM5181). The sample well of each lane was loaded with 30 ug of sample under reducing conditions.

Lane 1: rat brain tissue lysates,

Lane 2: mouse brain tissue lysates.

After electrophoresis, proteins were transferred to a membrane. Then the membrane was incubated with rabbit anti-Beclin 1/BECN1 antigen affinity purified monoclonal antibody (BM5181) at a dilution of 1:1000 and probed with a goat anti-rabbit IgG-HRP secondary antibody (Catalog # BA1054). The signal is developed using ECL Plus Western Blotting Substrate (Catalog # AR1197). A specific band was detected for Beclin 1/BECN1 at approximately 52 kDa. The expected band size for Beclin 1/BECN1 is at 52 kDa.



Immunohistochemical analysis of paraffin-embedded human breast cancer, using Beclin 1 Antibody.

Product datasheet

**Anti-Beclin 1/BECN1 Antibody  
(Clone#ADA-2)**

**Catalog Number: BM5181**

**BOSTER**<sup>®</sup>

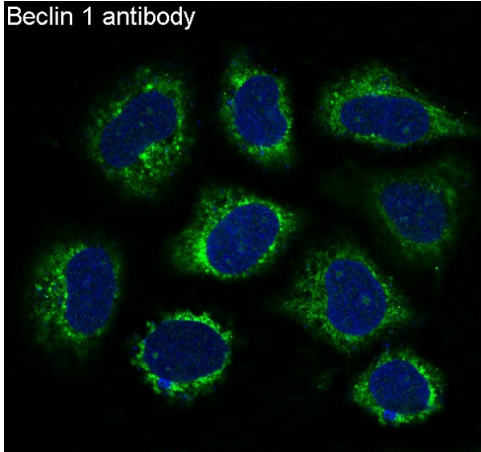
antibody and ELISA experts

**BOSTER BIOLOGICAL TECHNOLOGY**

Building C21, 3rd to 5th Floors, Optics Valley Biopharmaceutical Accelerator,  
East Lake High-Tech Development Zone, Wuhan.

**Web:** [www.boster.com](http://www.boster.com) **Phone:** 027-67845390/1/2 **Email:** [boster@boster.com](mailto:boster@boster.com)

Beclin 1 antibody



Immunofluorescent analysis of HeLa cells, using Beclin 1 Antibody.