

Basic Information

Product Name	Anti-ATG12 Antibody (Clone#17A34)	
Gene Name	ATG12	
Source	Rabbit	
Clonality	Monoclonal	
Isotype	IgG	
Species Reactivity	human	
Tested Application	WB, IHC, ICC/IF, IP, FCM	
Contents	500 ug/ml; Rabbit IgG in phosphate buffered saline, pH 7.4, 150mM NaCl, 0.02% sodium azide, 0.4-0.5 mg/ml BSA and 50% glycerol.	
Immunogen	A synthesized peptide derived from human Apg12(Atg12)	
Concentration	500 ug/ml	
Observed MW	45-50 kDa	
Dilution Ratios	Western blot (WB):	1:500-2000
	Immunohistochemistry (IHC):	1:50-200
	Immunocytochemistry/Immunofluorescence (ICC/IF):	1:50-200
	ImmunoPrecipitation (IP):	1:20
	Flow Cytometry (FCM):	1:20

Storage

12 months from date of receipt, -20°C as supplied.

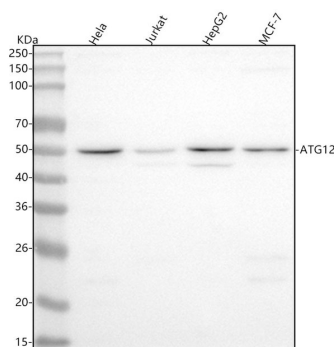
Background Information

Ubiquitin-like protein required for autophagy. Conjugated to ATG3 and ATG5.

Reference

Anti-ATG12 Antibody (Clone#17A34)被引用在1文献中。

Selected Validation Data



Western blot analysis of anti-ATG12 antibody (BM5176). The sample well of each lane was loaded with 30 ug of sample under reducing conditions.

Lane 1: human HeLa whole cell lysates,

Lane 2: human Jurkat whole cell lysates,

Lane 3: human HepG2 whole cell lysates,

Lane 4: human MCF-7 whole cell lysates.

After electrophoresis, proteins were transferred to a membrane.

Then the membrane was incubated with rabbit anti-ATG12 antigen affinity purified monoclonal antibody (BM5176) at a dilution of 1:1000 and probed with a goat anti-rabbit IgG-HRP secondary antibody (Catalog # BA1054). The signal is developed using ECL Plus Western Blotting Substrate (Catalog # AR1197). A specific band was detected for ATG12 at approximately 50 kDa. The expected band size for ATG12 is at 15 kDa.