

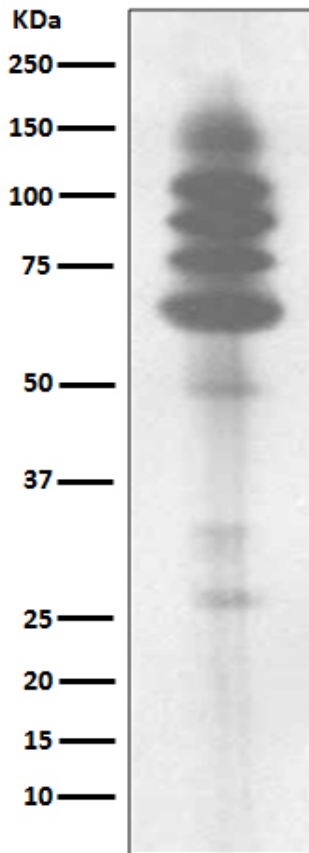
Basic Information

Product Name	Anti-Phosphotyrosine Antibody (Clone#AAOI-20)	
Gene Name	N/A	
Source	Rabbit	
Clonality	Monoclonal	
Isotype	IgG	
Species Reactivity	human, mouse, rat	
Tested Application	WB, ICC/IF, IP, FCM	
Contents	500 ug/ml; Rabbit IgG in phosphate buffered saline, pH 7.4, 150mM NaCl, 0.02% sodium azide, 0.4-0.5 mg/ml BSA and 50% glycerol.	
Immunogen	A synthesized peptide derived from Phosphotyrosine.	
Concentration	500 ug/ml	
Purification	Affinity-chromatography	
Dilution Ratios	Western blot (WB):	1:500-2000
	Immunocytochemistry/Immunofluorescence (ICC/IF):	1:50-200
	Flow Cytometry (FCM):	1:50
	ImmunoPrecipitation (IP):	1:50

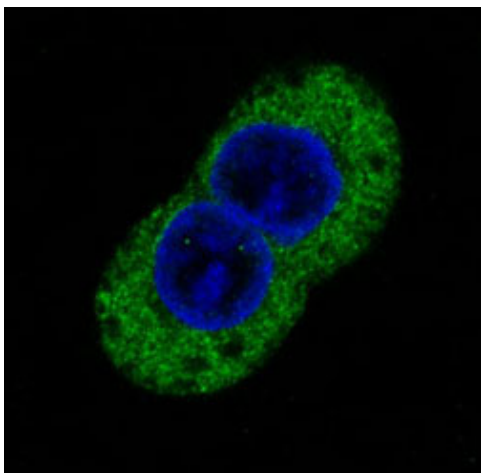
Storage

12 months from date of receipt, -20°C as supplied.

Selected Validation Data



Western blot analysis of Phosphotyrosine expression in Jurkat cell lysate.



Immunofluorescent analysis of A431 cells treated with pervanadate, using Phosphotyrosine Antibody.