

Basic Information

Product Name	Anti-LC3B/MAP1LC3B Antibody (Clone#IEC-13)		
Gene Name	MAP1LC3B		
Source	Rabbit		
Clonality	Monoclonal		
Isotype	IgG		
Species Reactivity	human, mouse, rat		
Tested Application	WB, IHC, ICC/IF, IP		
Contents	500 ug/ml; Rabbit IgG in phosphate buffered saline, pH 7.4, 150mM NaCl, 0.02% sodium azide, 0.4-0.5 mg/ml BSA and 50% glycerol.		
Immunogen	A synthesized peptide derived from human LC3B		
Concentration	500 ug/ml		
Purification	Affinity-chromatography		
Observed MW	18 kDa		
Dilution Ratios	Western blot (WB):	1:500-2000	
	Immunohistochemistry (IHC):	1:50-200	
	Immunocytochemistry/Immunofluorescence (ICC/IF):	1:50-200	
	ImmunoPrecipitation (IP):	1:50	

Storage

12 months from date of receipt, -20°C as supplied.

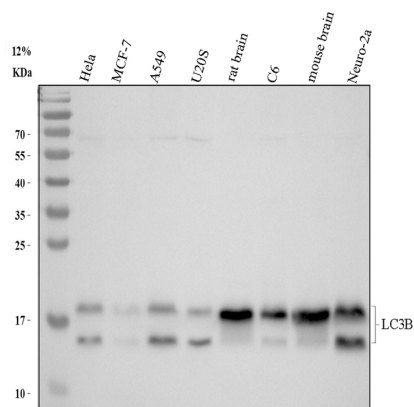
Background Information

MAP1LC3B is a member of the MAP1 LC3 family. MAP1LC3B is a subunit of neuronal microtubule-associated MAP1A and MAP1B proteins, that are involved in microtubule assembly and important for neurogenesis. In addition, MAP1LC3B takes part in formation of autophagosomal vacuoles and is expressed mainly in heart, testis, brain and skeletal muscle.

Reference

Anti-LC3B/MAP1LC3B Antibody (Clone#IEC-13)被引用在35文献中。

Selected Validation Data



Western blot analysis of anti-LC3B/MAP1LC3B antibody (BM4827).

The sample well of each lane was loaded with 30 ug of sample under reducing conditions.

Lane 1: human HeLa whole cell lysates,

Lane 2: human MCF-7 whole cell lysates,

Lane 3: human A549 whole cell lysates,

Lane 4: human U2OS whole cell lysates,

Lane 5: rat brain tissue lysates,

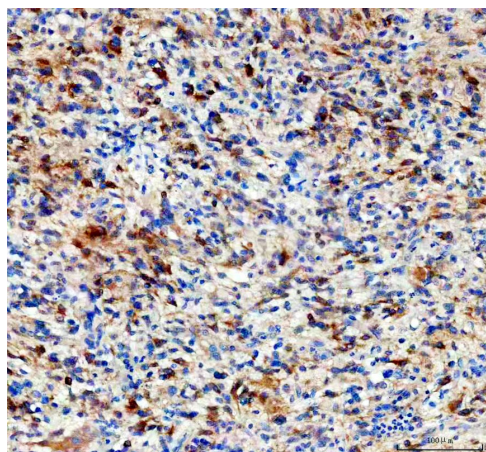
Lane 6: rat C6 whole cell lysates,

Lane 7: mouse brain tissue lysates,

Lane 8: mouse Neuro-2a whole cell lysates.

After electrophoresis, proteins were transferred to a membrane.

Then the membrane was incubated with rabbit anti-LC3B/MAP1LC3B antigen affinity purified monoclonal antibody (BM4827) at a dilution of 1:1000 and probed with a goat anti-rabbit IgG-HRP secondary antibody (Catalog # BA1054). The signal is developed using ECL Plus Western Blotting Substrate (Catalog # AR1197). A specific band was detected for LC3B/MAP1LC3B at approximately 18 kDa. The expected band size for LC3B/MAP1LC3B is at 15 kDa.



IHC analysis of LC3B/MAP1LC3B using anti-LC3B/MAP1LC3B antibody (BM4827).

LC3B/MAP1LC3B was detected in a paraffin-embedded section of human glioma tissue. The tissue section was incubated with rabbit anti-LC3B/MAP1LC3B Antibody (BM4827) at a dilution of 1:200 and developed using HRP Conjugated Rabbit IgG Super Vision Assay Kit (Catalog # SV0002) with DAB (Catalog # AR1027) as the chromogen.

Product datasheet

**Anti-LC3B/MAP1LC3B Antibody
(Clone#IEC-13)**

Catalog Number: BM4827

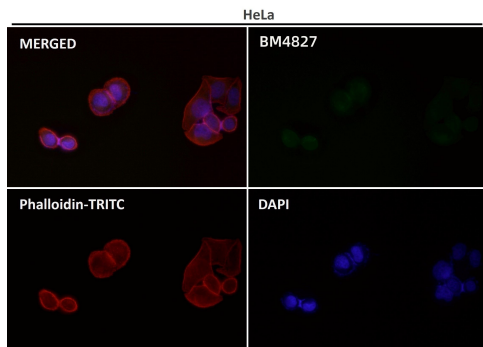
BOSTER[®]

antibody and ELISA experts

BOSTER BIOLOGICAL TECHNOLOGY

Building C21, 3rd to 5th Floors, Optics Valley Biopharmaceutical Accelerator,
East Lake High-Tech Development Zone, Wuhan.

Web: www.boster.com **Phone:** 027-67845390/1/2 **Email:** boster@boster.com



Immunofluorescent analysis using the Antibody.