

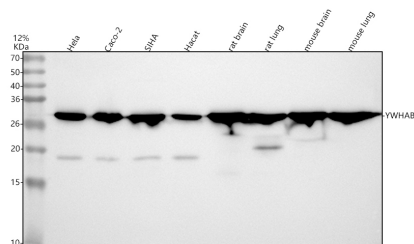
Basic Information

Product Name	Anti-14-3-3 alpha/beta Antibody (Clone#HHA-25)	
Gene Name	YWHAB	
Source	Rabbit	
Clonality	Monoclonal	
Isotype	IgG	
Species Reactivity	human, mouse, rat	
Tested Application	WB, IHC, ICC/IF, IP, FCM	
Contents	500 ug/ml; Rabbit IgG in phosphate buffered saline, pH 7.4, 150mM NaCl, 0.02% sodium azide, 0.4-0.5 mg/ml BSA and 50% glycerol.	
Immunogen	A synthesized peptide derived from human 14-3-3 alpha + beta	
Concentration	500 ug/ml	
Purification	Affinity-chromatography	
Observed MW	28 kDa	
Dilution Ratios	Western blot (WB):	1:500-2000
	Immunohistochemistry (IHC):	1:50-200
	Immunocytochemistry/Immunofluorescence (ICC/IF):	1:50-200
	ImmunoPrecipitation (IP):	1:30
	Flow Cytometry (FCM):	1:30

Storage

12 months from date of receipt, -20°C as supplied.

Selected Validation Data



Western blot analysis of anti-14-3-3 alpha/beta antibody (BM4752).

The sample well of each lane was loaded with 30 ug of sample under reducing conditions.

Lane 1: human Hela whole cell lysates,

Lane 2: human Caco-2 whole cell lysates,

Lane 3: human SiHa whole cell lysates,

Lane 4: human Hacat whole cell lysates,

Lane 5: rat brain tissue lysates,

Lane 6: rat lung tissue lysates,

Lane 7: mouse brain tissue lysates,

Lane 8: mouse lung tissue lysates.

After electrophoresis, proteins were transferred to a membrane.

Then the membrane was incubated with rabbit anti-14-3-3 alpha/beta antigen affinity purified monoclonal antibody (BM4752) at a dilution of 1:1000 and probed with a goat anti-rabbit IgG-HRP secondary antibody (Catalog # BA1054). The signal is developed using ECL Plus Western Blotting Substrate (Catalog # AR1197). A specific band was detected for 14-3-3 alpha/beta at approximately 28 kDa. The expected band size for 14-3-3 alpha/beta is at 28 kDa.