

Basic Information

Product Name	Anti-Cyclin A2/CCNA2 Antibody (Clone#HOD-3)
Gene Name	CCNA2
Source	Rabbit
Clonality	Monoclonal
Isotype	IgG
Species Reactivity	human
Tested Application	WB, IHC, IP
Contents	500 ug/ml; Rabbit IgG in phosphate buffered saline, pH 7.4, 150mM NaCl, 0.02% sodium azide, 0.4-0.5 mg/ml BSA and 50% glycerol.
Immunogen	A synthesized peptide derived from human Cyclin A1/A2
Concentration	500 ug/ml
Purification	Affinity-chromatography
Observed MW	55 kDa
Dilution Ratios	Western blot (WB): 1:500-2000 Immunohistochemistry (IHC):1:50-200 ImmunoPrecipitation (IP): 1:20

Storage

12 months from date of receipt, -20°C as supplied.

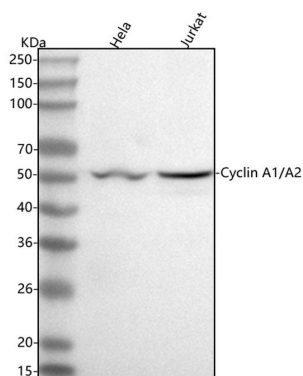
Background Information

The mammalian A-type cyclin family consists of 2 members, cyclin A1(CCNA1) and cyclin A2(CCNA2). Human cyclin A gene is assigned to 4q26-q27. Cyclin A protein is synthesized and localized into the nucleus at the onset of S phase in nontransformed mammalian fibroblasts.

Reference

Anti-Cyclin A2/CCNA2 Antibody (Clone#HOD-3)被引用在6文献中。

Selected Validation Data



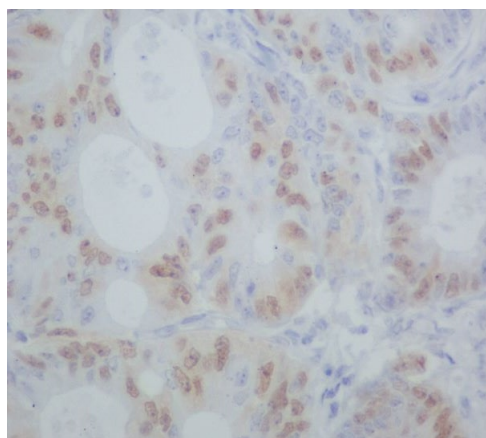
Western blot analysis of anti-Cyclin A2/CCNA2 antibody (BM4674). The sample well of each lane was loaded with 30 ug of sample under reducing conditions.

Lane 1: human HeLa whole cell lysates,

Lane 2: human Jurkat whole cell lysates.

After electrophoresis, proteins were transferred to a membrane.

Then the membrane was incubated with rabbit anti-Cyclin A2/CCNA2 antigen affinity purified monoclonal antibody (BM4674) at a dilution of 1:1000 and probed with a goat anti-rabbit IgG-HRP secondary antibody (Catalog # BA1054). The signal is developed using ECL Plus Western Blotting Substrate (Catalog # AR1197). A specific band was detected for Cyclin A2/CCNA2 at approximately 55 kDa. The expected band size for Cyclin A2/CCNA2 is at 49, 52 kDa.



Immunohistochemical analysis of paraffin-embedded human colon cancer, using Cyclin A1/A2 Antibody.