

## Basic Information

Product Name	Anti-Cyclin E2/CCNE2 Antibody (Clone#GHH-3)	
Gene Name	CCNE2	
Source	Rabbit	
Clonality	Monoclonal	
Isotype	IgG	
Species Reactivity	human, mouse	
Tested Application	WB, IHC, ICC/IF, FCM	
Contents	500 ug/ml; Rabbit IgG in phosphate buffered saline, pH 7.4, 150mM NaCl, 0.02% sodium azide, 0.4-0.5 mg/ml BSA and 50% glycerol.	
Immunogen	A synthesized peptide derived from human Cyclin E2	
Concentration	500 ug/ml	
Purification	Affinity-chromatography	
Observed MW	47 kDa	
Dilution Ratios	Western blot (WB):	1:500-2000
	Immunohistochemistry (IHC):	1:50-200
	Immunocytochemistry/Immunofluorescence (ICC/IF):	1:50-200
	Flow Cytometry (FCM):	1:20

## Storage

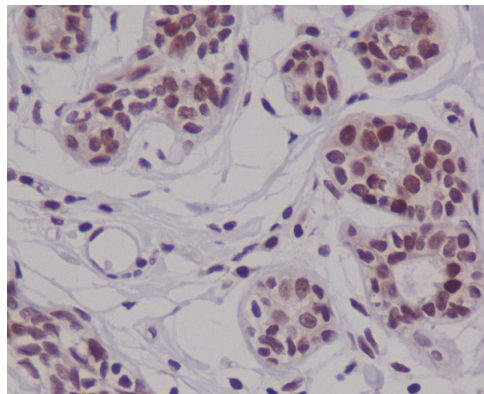
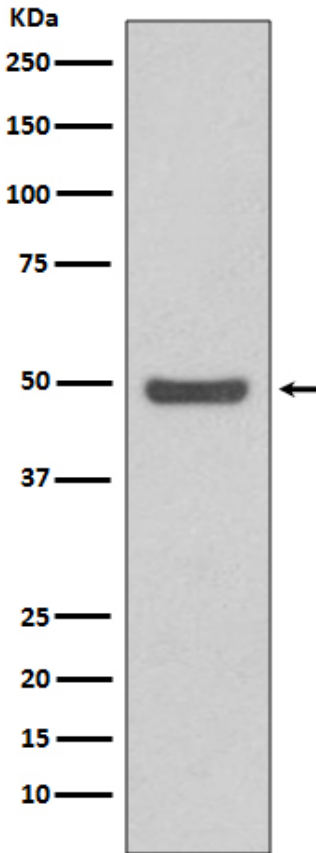
12 months from date of receipt, -20°C as supplied.

## Reference

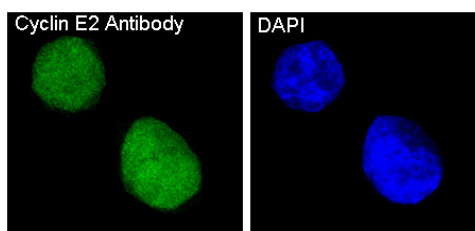
Anti-Cyclin E2/CCNE2 Antibody (Clone#GHH-3)被引用在5文献中。

## Selected Validation Data

Western blot analysis of Cyclin E2 expression in HeLa cell lysate.



Immunohistochemical analysis of paraffin-embedded human breast carcinoma, using Cyclin E2 Antibody.



Immunofluorescent analysis of HeLa cells, using Cyclin E2 Antibody.

Product datasheet

**Anti-Cyclin E2/CCNE2 Antibody  
(Clone#GHH-3)**

**Catalog Number: BM4658**

**BOSTER**<sup>®</sup>

antibody and ELISA experts

**BOSTER BIOLOGICAL TECHNOLOGY**

Building C21, 3rd to 5th Floors, Optics Valley Biopharmaceutical Accelerator,  
East Lake High-Tech Development Zone, Wuhan.

**Web:** [www.boster.com](http://www.boster.com) **Phone:** 027-67845390/1/2 **Email:** [boster@boster.com](mailto:boster@boster.com)