

Basic Information

Product Name	Anti-ATG9A Antibody (Clone#FGF-1)	
Gene Name	ATG9A	
Source	Rabbit	
Clonality	Monoclonal	
Isotype	IgG	
Species Reactivity	human, mouse, rat	
Tested Application	WB, IHC, ICC/IF, IP	
Contents	500 ug/ml; Rabbit IgG in phosphate buffered saline, pH 7.4, 150mM NaCl, 0.02% sodium azide, 0.4-0.5 mg/ml BSA and 50% glycerol.	
Immunogen	A synthesized peptide derived from human ATG9A	
Concentration	500 ug/ml	
Purification	Affinity-chromatography	
Observed MW	100-110 kDa	
Dilution Ratios	Western blot (WB):	1:500-2000
	Immunohistochemistry (IHC):	1:50-200
	Immunocytochemistry/Immunofluorescence (ICC/IF):	1:50-200
	ImmunoPrecipitation (IP):	1:20

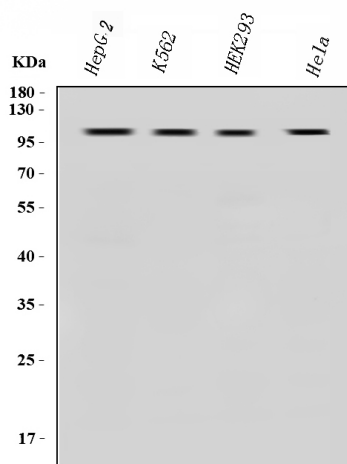
Storage

12 months from date of receipt, -20°C as supplied.

Background Information

Autophagy-related protein 9A is a protein that in humans is encoded by the ATG9A gene. ATG9A is the only transmembrane ATG protein essential for autophagy. It plays a key role in the organization of the preautophagosomal structure/phagophore assembly site (PAS). It has been reported that ATG9A expression is increased in oral squamous cell carcinoma and breast cancers. The inhibition of ATG9A can lead to an inhibition of cancer cell proliferation and invasion.

Selected Validation Data



Western blot analysis of anti- ATG9A Antibody (BM4543). The sample well of each lane was loaded with 50ug of sample under reducing conditions.

Lane 1: HepG2 whole cell lysates,

Lane 2: K562 whole cell lysates,

Lane 3: HEK293 whole cell lysates,

Lane 4: HELA whole cell lysates.

Use rabbit anti- ATG9A 1:1000, probed with a goat anti-rabbit IgG-HRP secondary antibody. The signal is developed using an Enhanced Chemiluminescent detection (ECL) kit (Catalog # EK1002). A specific band was detected for ATG9A at approximately 100KD. The expected band size for ATG9A is at 94KD.