

Product datasheet
Anti-STAT1 (Phospho-S727) Antibody
(Clone#CA-20)
Catalog Number: **BM4541**



antibody and ELISA experts

BOSTER BIOLOGICAL TECHNOLOGY

Building C21, 3rd to 5th Floors, Optics Valley Biopharmaceutical Accelerator,
East Lake High-Tech Development Zone, Wuhan.

Web: www.boster.com Phone: 027-67845390/1/2 Email: boster@boster.com

Basic Information

Product Name	Anti-STAT1 (Phospho-S727) Antibody (Clone#CA-20)
Gene Name	STAT1
Source	Rabbit
Clonality	Monoclonal
Isotype	IgG
Species Reactivity	human, mouse, rat
Tested Application	WB, IHC
Contents	500 ug/ml; Rabbit IgG in phosphate buffered saline, pH 7.4, 150mM NaCl, 0.02% sodium azide, 0.4-0.5 mg/ml BSA and 50% glycerol.
Immunogen	A synthesized peptide derived from human Phospho-STAT1 (S727)
Concentration	500 ug/ml
Purification	Affinity-chromatography
Observed MW	91 kDa
Dilution Ratios	Western blot (WB): 1:500-2000 Immunohistochemistry (IHC):1:50-200

Storage

12 months from date of receipt, -20°C as supplied.

Background Information

The protein encoded by this gene is a member of the STAT protein family. In response to cytokines and growth factors, STAT family members are phosphorylated by the receptor associated kinases, and then form homo- or heterodimers that translocate to the cell nucleus where they act as transcription activators.

Reference

Anti-STAT1 (Phospho-S727) Antibody (Clone#CA-20)被引用在3文献中。

Product datasheet
Anti-STAT1 (Phospho-S727) Antibody
(Clone#CA-20)

Catalog Number: BM4541

BOSTER[®]

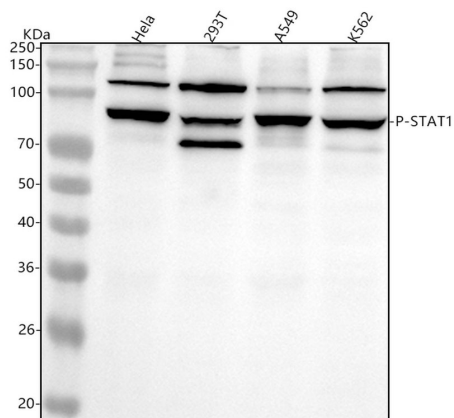
antibody and ELISA experts

BOSTER BIOLOGICAL TECHNOLOGY

Building C21, 3rd to 5th Floors, Optics Valley Biopharmaceutical Accelerator,
East Lake High-Tech Development Zone, Wuhan.

Web: www.boster.com **Phone:** 027-67845390/1/2 **Email:** boster@boster.com

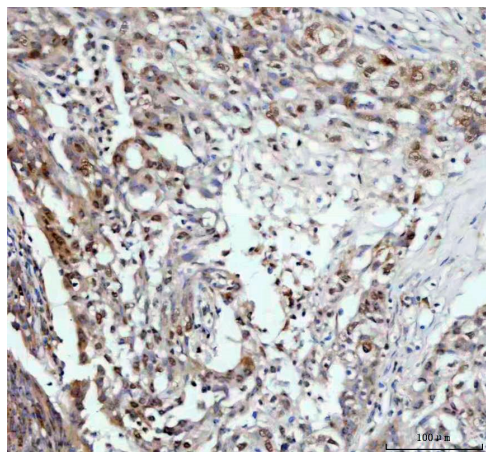
Selected Validation Data



Western blot analysis of anti-STAT1 antibody (BM4541). The sample well of each lane was loaded with 30 ug of sample under reducing conditions.

Lane 1: human HeLa whole cell lysates,
Lane 2: human 293T whole cell lysates,
Lane 3: human A549 whole cell lysates,
Lane 4: human K562 whole cell lysates.

After electrophoresis, proteins were transferred to a membrane. Then the membrane was incubated with rabbit anti-STAT1 antigen affinity purified monoclonal antibody (BM4541) at a dilution of 1:1000 and probed with a goat anti-rabbit IgG-HRP secondary antibody (Catalog # BA1054). The signal is developed using ECL Plus Western Blotting Substrate (Catalog # AR1197). A specific band was detected for STAT1 at approximately 87 kDa. The expected band size for STAT1 is at 87 kDa.



IHC analysis of STAT1 using anti-STAT1 antibody (BM4541). STAT1 was detected in a paraffin-embedded section of human breast cancer tissue. The tissue section was incubated with rabbit anti-STAT1 Antibody (BM4541) at a dilution of 1:200 and developed using HRP Conjugated Rabbit IgG Super Vision Assay Kit (Catalog # SV0002) with DAB (Catalog # AR1027) as the chromogen.