

## Basic Information

<b>Product Name</b>	Anti-Chk1/CHEK1 (Phospho-S296) Antibody (Clone#FEO-3)
<b>Gene Name</b>	CHEK1
<b>Source</b>	Rabbit
<b>Clonality</b>	Monoclonal
<b>Isotype</b>	IgG
<b>Species Reactivity</b>	human
<b>Tested Application</b>	WB
<b>Contents</b>	500 ug/ml; Rabbit IgG in phosphate buffered saline, pH 7.4, 150mM NaCl, 0.02% sodium azide, 0.4-0.5 mg/ml BSA and 50% glycerol.
<b>Immunogen</b>	A synthesized peptide derived from human Phospho-Chk1 (S296)
<b>Concentration</b>	500 ug/ml
<b>Purification</b>	Affinity-chromatography
<b>Observed MW</b>	54 kDa
<b>Dilution Ratios</b>	Western blot (WB):1:500-2000

## Storage

12 months from date of receipt, -20°C as supplied.

## Background Information

CHEK1, Cell cycle checkpoint kinase, is an enzyme that in humans is encoded by the CHEK1 gene. By fluorescence in situ hybridization, the human CHEK1 gene is mapped to 11q24, near the ATM gene at 11q23. CHEK1 is a kinase that phosphorylates cdc25, an important phosphatase in cell cycle control, particularly for entry into mitosis. Furthermore, CHEK1 acts to integrate signals from ATM and ATR, and is involved in monitoring meiotic recombination, a process that involves programmed DNA breaks.

## Selected Validation Data

Product datasheet

## Anti-Chk1/CHEK1 (Phospho-S296)

Antibody (Clone#FEO-3)

Catalog Number: **BM4516**

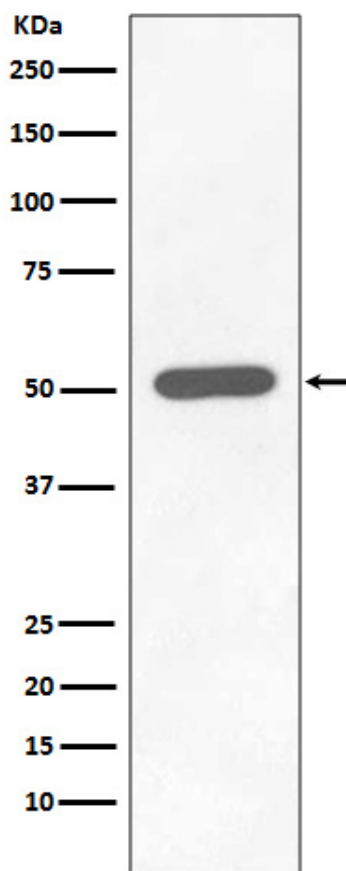
# BOSTER<sup>®</sup>

antibody and ELISA experts

**BOSTER BIOLOGICAL TECHNOLOGY**

Building C21, 3rd to 5th Floors, Optics Valley Biopharmaceutical Accelerator,  
East Lake High-Tech Development Zone, Wuhan.

**Web:** [www.boster.com](http://www.boster.com) **Phone:** 027-67845390/1/2 **Email:** [boster@boster.com](mailto:boster@boster.com)



Western blot analysis of Phospho-Chk1 (S296) expression in HEK293 cell lysate Treated with Calyculin.