

Basic Information

| | | | |
|---------------------------|---|--|--|
| Product Name | Anti-ACACA/B Antibody (Clone#EDI-1) | | |
| Gene Name | ACACA/ACACB | | |
| Source | Rabbit | | |
| Clonality | Monoclonal | | |
| Isotype | IgG | | |
| Species Reactivity | human, mouse, rat | | |
| Tested Application | WB, IHC | | |
| Contents | 500 ug/ml; Rabbit IgG in phosphate buffered saline, pH 7.4, 150mM NaCl, 0.02% sodium azide, 0.4-0.5 mg/ml BSA and 50% glycerol. | | |
| Immunogen | A synthesized peptide derived from human Acetyl-CoA Carboxylase | | |
| Concentration | 500ug/ml | | |
| Purification | Affinity-chromatography | | |
| Observed MW | 266 kDa | | |
| Dilution Ratios | Western blot (WB): 1:500-2000 Immunohistochemistry (IHC):1:50-200 | | |

Storage

12 months from date of receipt, -20°C as supplied.

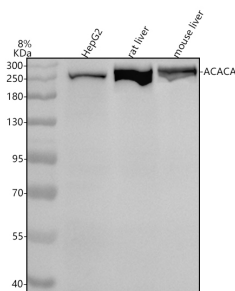
Background Information

ACC1 a subunit of acetyl-CoA carboxylase (ACC), a multifunctional enzyme system. Catalyzes the carboxylation of acetyl-CoA to malonyl-CoA, the rate-limiting step in fatty acid synthesis. Acetyl-CoA carboxylase (ACC) catalyzes the pivotal step of the fatty acid synthesis pathway. The 265 kDa ACC Alpha (ACC1) is the predominant isoform found in liver, adipocytes, and mammary gland, while the 280 kDa ACC Beta (ACC2) is the major isoform in skeletal muscle and heart.

Reference

Anti-ACACA/B Antibody (Clone#EDI-1)被引用在6文献中。

Selected Validation Data



Western blot analysis of anti-ACC1/ACACA antibody (BM4414). The sample well of each lane was loaded with 30 ug of sample under reducing conditions.

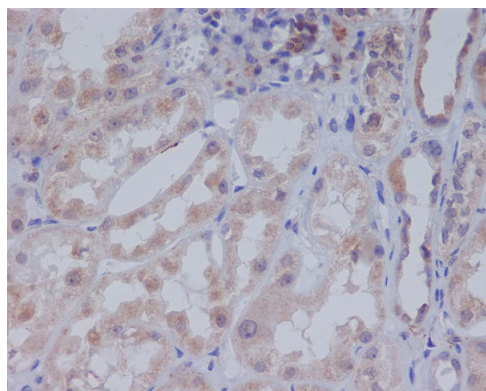
Lane 1: human HepG2 whole cell lysates,

Lane 2: rat liver tissue lysates,

Lane 3: mouse liver tissue lysates.

After electrophoresis, proteins were transferred to a membrane.

Then the membrane was incubated with rabbit anti-ACC1/ACACA antigen affinity purified monoclonal antibody (BM4414) at a dilution of 1:1000 and probed with a goat anti-rabbit IgG-HRP secondary antibody (Catalog # BA1054). The signal is developed using ECL Plus Western Blotting Substrate (Catalog # AR1197). A specific band was detected for ACC1/ACACA at approximately 266 kDa. The expected band size for ACC1/ACACA is at 266 kDa.



Immunohistochemical analysis of paraffin-embedded human kidney, using Acetyl-CoA Carboxylase Antibody.