

Basic Information

Product Name	Anti-Cyclin B1/CCNB1 Antibody (Clone#EOG-3)	
Gene Name	CCNB1	
Source	Rabbit	
Clonality	Monoclonal	
Isotype	IgG	
Species Reactivity	human, mouse, rat	
Tested Application	WB, IHC, ICC/IF, FCM	
Contents	500 ug/ml; Rabbit IgG in phosphate buffered saline, pH 7.4, 150mM NaCl, 0.02% sodium azide, 0.4-0.5 mg/ml BSA and 50% glycerol.	
Immunogen	A synthesized peptide derived from human Cyclin B1	
Concentration	500 ug/ml	
Purification	Affinity-chromatography	
Observed MW	55 kDa	
Dilution Ratios	Western blot (WB):	1:500-2000
	Immunohistochemistry (IHC):	1:50-200
	Immunocytochemistry/Immunofluorescence (ICC/IF):	1:50-200
	Flow Cytometry (FCM):	1:100

Storage

12 months from date of receipt, -20°C as supplied.

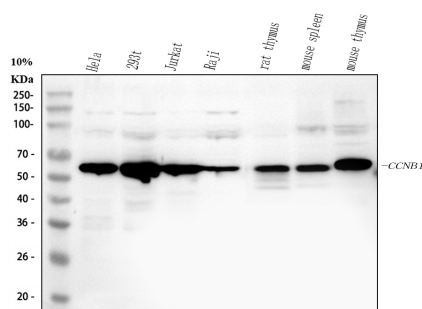
Background Information

CCNB also known as Cyclin B1, is a protein that in humans is encoded by the CCNB1 gene, and it is mapped to 5q13.2. The protein encoded by this gene is a regulatory protein involved in mitosis. The gene product complexes with p34(cdc2) to form the maturation-promoting factor (MPF). Two alternative transcripts have been found, a constitutively expressed transcript and a cell cycle-regulated transcript, that is expressed predominantly during G2/M phase. The different transcripts result from the use of alternate transcription initiation sites. CCNB contributes to the switch-like all or none behavior of the cell in deciding to commit to mitosis. Its activation is well-regulated, and positive feedback loops ensure that once the cyclin B1-Cdk1 complex is activated, it is not deactivated.

Reference

Anti-Cyclin B1/CCNB1 Antibody (Clone#EOG-3)被引用在4文献中。

Selected Validation Data



Western blot analysis of anti-Cyclin B1/CCNB1 antibody (BM4370).

The sample well of each lane was loaded with 30 ug of sample under reducing conditions.

Lane 1: human HeLa whole cell lysates,

Lane 2: human 293T whole cell lysates,

Lane 3: human Jurkat whole cell lysates,

Lane 4: human Raji whole cell lysates,

Lane 5: rat thymus tissue lysates,

Lane 6: mouse spleen tissue lysates,

Lane 7: mouse thymus tissue lysates.

After electrophoresis, proteins were transferred to a membrane.

Then the membrane was incubated with rabbit anti-Cyclin B1/CCNB1

antigen affinity purified monoclonal antibody (BM4370) and probed

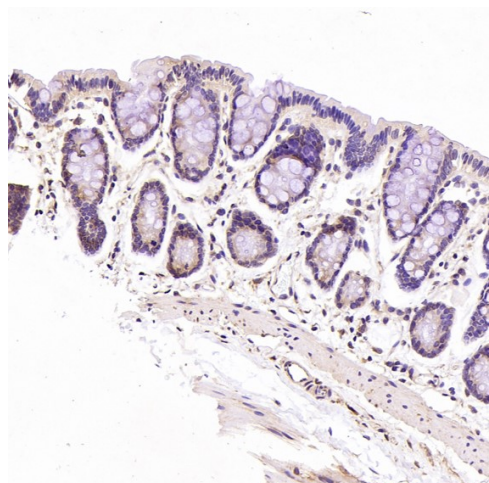
with a goat anti-rabbit IgG-HRP secondary antibody (Catalog #

BA1054). The signal is developed using ECL Plus Western Blotting

Substrate (Catalog # AR1197). A specific band was detected for

Cyclin B1/CCNB1 at approximately 55 kDa. The expected band size

for Cyclin B1/CCNB1 is at 48 kDa.



Immunohistochemical analysis of paraffin-embedded Rat stomach,
using the Antibody at 1:200 dilution.

Product datasheet

**Anti-Cyclin B1/CCNB1 Antibody
(Clone#EOG-3)**

Catalog Number: BM4370

BOSTER[®]

antibody and ELISA experts

BOSTER BIOLOGICAL TECHNOLOGY

Building C21, 3rd to 5th Floors, Optics Valley Biopharmaceutical Accelerator,
East Lake High-Tech Development Zone, Wuhan.

Web: www.boster.com **Phone:** 027-67845390/1/2 **Email:** boster@boster.com