

## Basic Information

<b>Product Name</b>	Anti-LC3A/MAP1LC3A Antibody (Clone#EOD-13)	
<b>Gene Name</b>	MAP1LC3A	
<b>Source</b>	Rabbit	
<b>Clonality</b>	Monoclonal	
<b>Isotype</b>	IgG	
<b>Species Reactivity</b>	human, mouse, rat	
<b>Tested Application</b>	WB, IHC, ICC/IF, IP, FCM	
<b>Contents</b>	500 ug/ml; Rabbit IgG in phosphate buffered saline, pH 7.4, 150mM NaCl, 0.02% sodium azide, 0.4-0.5 mg/ml BSA and 50% glycerol.	
<b>Immunogen</b>	A synthesized peptide derived from human MAP1LC3A	
<b>Concentration</b>	500 ug/ml	
<b>Purification</b>	Affinity-chromatography	
<b>Observed MW</b>	18 kDa	
<b>Dilution Ratios</b>	Western blot (WB):	1:500-2000
	Immunohistochemistry (IHC):	1:50-200
	Immunocytochemistry/Immunofluorescence (ICC/IF):	1:50-200
	ImmunoPrecipitation (IP):	1:50
	Flow Cytometry (FCM):	1:50

## Storage

12 months from date of receipt, -20°C as supplied.

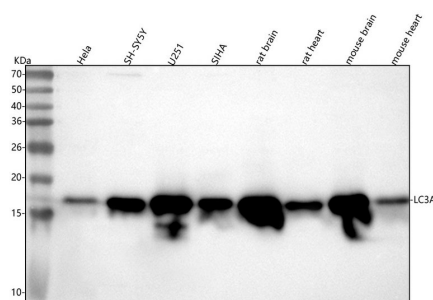
## Background Information

Microtubule-associated proteins 1A/1B light chain 3A is a protein that in humans is encoded by the MAP1LC3A gene. MAP1A and MAP1B are microtubule-associated proteins which mediate the physical interactions between microtubules and components of the cytoskeleton. MAP1A and MAP1B each consist of a heavy chain subunit and multiple light chain subunits. The protein encoded by this gene is one of the light chain subunits and can associate with either MAP1A or MAP1B. Two transcript variants encoding different isoforms have been found for this gene. The expression of variant 1 is suppressed in many tumor cell lines, suggesting that may be involved in carcinogenesis.

## Reference

Anti-LC3A/MAP1LC3A Antibody (Clone#EOD-13)被引用在4文献中。

## Selected Validation Data



Western blot analysis of anti-LC3A/MAP1LC3A antibody (BM4367).

The sample well of each lane was loaded with 30 ug of sample under reducing conditions.

Lane 1: human Hela whole cell lysates,

Lane 2: human SH-SY5Y whole cell lysates,

Lane 3: human U251 whole cell lysates,

Lane 4: human SiHa whole cell lysates,

Lane 5: rat brain tissue lysates,

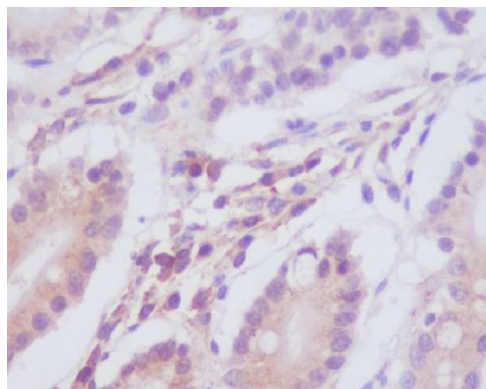
Lane 6: rat heart tissue lysates,

Lane 7: mouse brain tissue lysates,

Lane 8: mouse heart tissue lysates.

After electrophoresis, proteins were transferred to a membrane.

Then the membrane was incubated with rabbit anti-LC3A/MAP1LC3A antigen affinity purified monoclonal antibody (BM4367) at a dilution of 1:1000 and probed with a goat anti-rabbit IgG-HRP secondary antibody (Catalog # BA1054). The signal is developed using ECL Plus Western Blotting Substrate (Catalog # AR1197). A specific band was detected for LC3A/MAP1LC3A at approximately 14 kDa. The expected band size for LC3A/MAP1LC3A is at 14 kDa.



Immunohistochemical analysis of paraffin-embedded human stomach, using MAP1LC3A Antibody.

Product datasheet

# Anti-LC3A/MAP1LC3A Antibody (Clone#EOD-13)

Catalog Number: **BM4367**

# BOSTER<sup>®</sup>

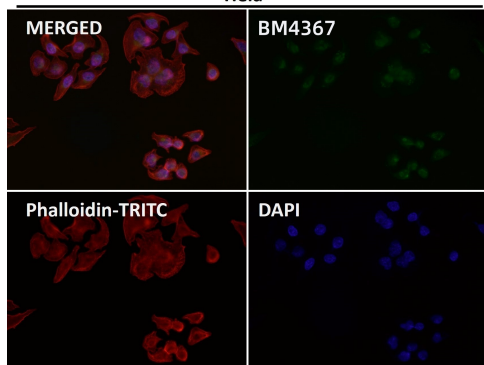
antibody and ELISA experts

**BOSTER BIOLOGICAL TECHNOLOGY**

Building C21, 3rd to 5th Floors, Optics Valley Biopharmaceutical Accelerator,  
East Lake High-Tech Development Zone, Wuhan.

**Web:** [www.boster.com](http://www.boster.com) **Phone:** 027-67845390/1/2 **Email:** [boster@boster.com](mailto:boster@boster.com)

Hela



Immunofluorescent analysis using the Antibody.