

Basic Information

Product Name	Anti-LAMP2 Antibody (Clone#DIE-12)	
Gene Name	LAMP2	
Source	Rabbit	
Clonality	Monoclonal	
Isotype	IgG	
Species Reactivity	human, mouse, rat	
Tested Application	WB, IHC, ICC/IF, IP, FCM	
Contents	500 ug/ml; Rabbit IgG in phosphate buffered saline, pH 7.4, 150mM NaCl, 0.02% sodium azide, 0.4-0.5 mg/ml BSA and 50% glycerol.	
Immunogen	A synthesized peptide derived from human LAMP2a	
Concentration	500 ug/ml	
Purification	Affinity-chromatography	
Observed MW	100-120 kDa	
Dilution Ratios	Western blot (WB):	1:500-2000
	Immunohistochemistry (IHC):	1:50-200
	Immunocytochemistry/Immunofluorescence (ICC/IF):	1:50-200
	ImmunoPrecipitation (IP):	1:50
	Flow Cytometry (FCM):	1:200

Storage

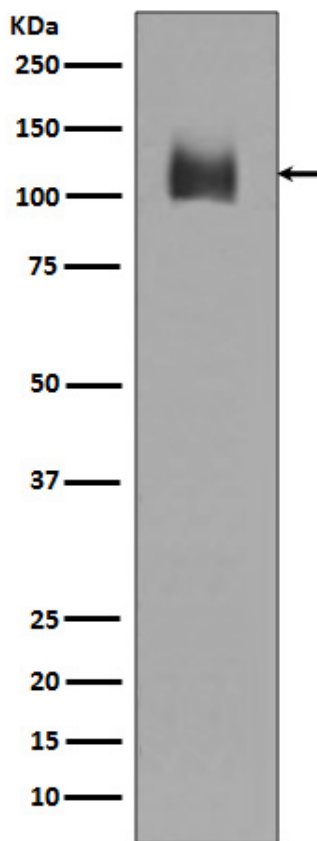
12 months from date of receipt, -20°C as supplied.

Reference

Anti-LAMP2 Antibody (Clone#DIE-12)被引用在3文献中。

Selected Validation Data

Western blot analysis of LAMP2 expression in JAR cell lysate.



Immunohistochemical analysis of paraffin-embedded Human small cell lung cancer, using the Antibody.

