

Basic Information

Product Name	Anti-Histone H3 (mono methyl K36) Antibody (Clone#DEG-8)		
Gene Name	H3C1/H3C2/H3C3/H3C4/H3C6/H3C7/H3C8/H3C10/H3C11/H3C12		
Source	Rabbit		
Clonality	Monoclonal		
Isotype	IgG		
Species Reactivity	human, mouse, rat		
Tested Application	WB, ICC/IF		
Contents	500 ug/ml; Rabbit IgG in phosphate buffered saline, pH 7.4, 150mM NaCl, 0.02% sodium azide, 0.4-0.5 mg/ml BSA and 50% glycerol.		
Immunogen	A synthesized peptide derived from human Histone H3 (mono methyl K36)		
Purification	Affinity-chromatography		
Observed MW	15-17 kDa		
Dilution Ratios	Western blot (WB): 1:500-2000 Immunocytochemistry/Immunofluorescence (ICC/IF):1:50-200		

Storage

12 months from date of receipt, -20°C as supplied.

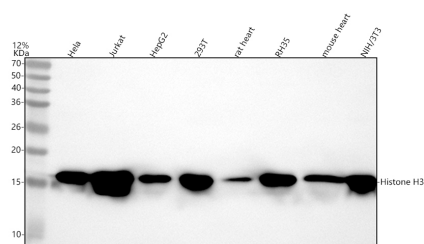
Background Information

Histones are the main constituents of the protein part of chromosomes of eukaryotic cells. They are rich in the amino acids arginine and lysine and have been greatly conserved during evolution. Histones pack the DNA into tight masses of chromatin. Two core histones of each class H2A, H2B, H3 and H4 assemble and are wrapped by 146 base pairs of DNA to form one octameric nucleosome. Histone tails undergo numerous post-translational modifications, which either directly or indirectly alter chromatin structure to facilitate transcriptional activation or repression or other nuclear processes. In addition to the genetic code, combinations of the different histone modifications reveal the so-called "histone code". Histone methylation and demethylation is dynamically regulated by respectively histone methyl transferases and histone demethylases.

Reference

Anti-Histone H3 (mono methyl K36) Antibody (Clone#DEG-8)被引用在1文献中。

Selected Validation Data



Western blot analysis of anti-Histone H3 (mono methyl K36) antibody (BM4316). The sample well of each lane was loaded with 30 ug of sample under reducing conditions.

Lane 1: human Hela whole cell lysates,

Lane 2: human Jurkat whole cell lysates,

Lane 3: human HepG2 whole cell lysates,

Lane 4: human 293T whole cell lysates,

Lane 5: rat heart tissue lysates,

Lane 6: rat RH-35 whole cell lysates,

Lane 7: mouse heart tissue lysates,

Lane 8: mouse NIH/3T3 whole cell lysates.

After electrophoresis, proteins were transferred to a membrane.

Then the membrane was incubated with rabbit anti-Histone H3 (mono methyl K36) antigen affinity purified monoclonal antibody (BM4316) at a dilution of 1:1000 and probed with a goat anti-rabbit IgG-HRP secondary antibody (Catalog # BA1054). The signal is developed using ECL Plus Western Blotting Substrate (Catalog # AR1197). A specific band was detected for Histone H3 (mono methyl K36) at approximately 15-17 kDa. The expected band size for Histone H3 (mono methyl K36) is at 15 kDa.