

## Basic Information

Product Name	Anti-IL-1 beta/IL1B Antibody (Clone#BII-9)
Gene Name	IL1B
Source	Rabbit
Clonality	Monoclonal
Isotype	IgG
Species Reactivity	human
Tested Application	WB
Contents	500 ug/ml; Rabbit IgG in phosphate buffered saline, pH 7.4, 150mM NaCl, 0.02% sodium azide, 0.4-0.5 mg/ml BSA and 50% glycerol.
Immunogen	A synthesized peptide derived from human IL1 beta.
Concentration	500 ug/ml
Purification	Affinity-chromatography
Observed MW	17 kDa
Dilution Ratios	Western blot (WB):1:500-2000

## Storage

12 months from date of receipt, -20°C as supplied.

## Background Information

Interleukin-1 beta(IL-1beta) also know as catabolin, is a cytokine protein that in humans is encoded by the IL1B gene, which localizes to the long arm of chromosome 2 at position 2q13-2q21 between two fragile sites. Interleukin 1(IL-1) is a protein with several biological activities regulating host defense and immune responses. The human IL-1 family plays an important role in the pathogenesis of many diseases and functions as a key mediator of the host response to various infectious, inflammatory, and immunologic challenges.

## Reference

Anti-IL-1 beta/IL1B Antibody (Clone#BII-9)被引用在1文献中。

Product datasheet

## Anti-IL-1 beta/IL1B Antibody (Clone#BII-9)

Catalog Number: **BM4157**

# BOSTER<sup>®</sup>

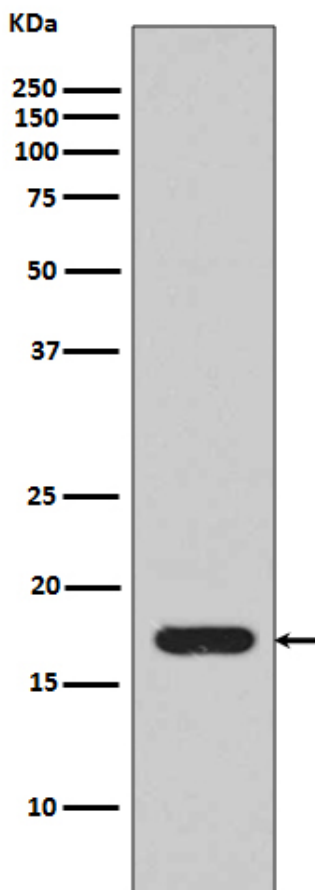
antibody and ELISA experts

**BOSTER BIOLOGICAL TECHNOLOGY**

Building C21, 3rd to 5th Floors, Optics Valley Biopharmaceutical Accelerator,  
East Lake High-Tech Development Zone, Wuhan.

Web: [www.boster.com](http://www.boster.com) Phone: 027-67845390/1/2 Email: [boster@boster.com](mailto:boster@boster.com)

## Selected Validation Data



Western blot analysis of extracts from recombinant IL1 beta, using IL1 beta antibody.