

Basic Information

Product Name	Anti-CDK1 Antibody (Clone#BOH-3)	
Gene Name	CDK1	
Source	Rabbit	
Clonality	Monoclonal	
Isotype	IgG	
Species Reactivity	human	
Tested Application	WB, IHC, ICC/IF, IP	
Contents	500 ug/ml; Rabbit IgG in phosphate buffered saline, pH 7.4, 150mM NaCl, 0.02% sodium azide, 0.4-0.5 mg/ml BSA and 50% glycerol.	
Immunogen	A synthesized peptide derived from human CDK1	
Concentration	500 ug/ml	
Purification	Affinity-chromatography	
Observed MW	34 kDa	
Dilution Ratios	Western blot (WB):	1:500-2000
	Immunohistochemistry (IHC):	1:50-200
	Immunocytochemistry/Immunofluorescence (ICC/IF):	1:50-200
	ImmunoPrecipitation (IP):	1:20

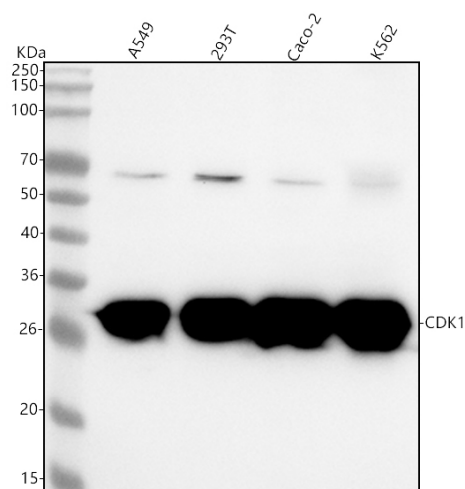
Storage

12 months from date of receipt, -20°C as supplied.

Background Information

The cyclin-dependent protein kinases(CDKs) regulate major cell cycle transitions in eukaryotic cells. CDKs contain an evolutionary conserved 16 amino acid sequence called PSTAIR(EGVPSTAIRESLLKE) which distinguishes them from other protein kinases. The PSTAIRE motif found in prototypic CDC2 kinases. CDC2L1 is referred as PITSLRE B, based on the amino acid sequence of the region corresponding to the conserved CDC2 PSTAIRE box.

Selected Validation Data



Western blot analysis of anti-CDK1 antibody (BM4062). The sample well of each lane was loaded with 30 ug of sample under reducing conditions.

Lane 1: human A549 whole cell lysates,

Lane 2: human 293T whole cell lysates,

Lane 3: human Caco-2 whole cell lysates,

Lane 4: human K562 whole cell lysates.

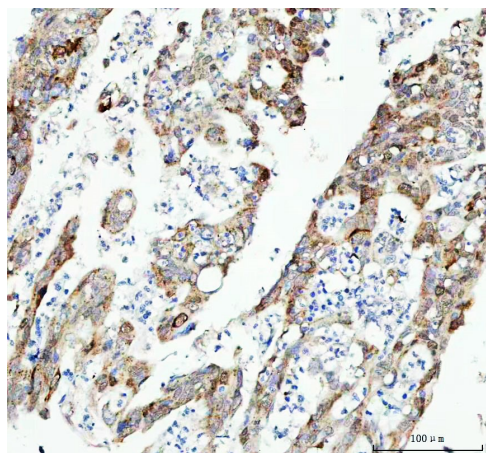
After electrophoresis, proteins were transferred to a membrane.

Then the membrane was incubated with rabbit anti-CDK1 antigen

affinity purified monoclonal antibody (BM4062) at a dilution of

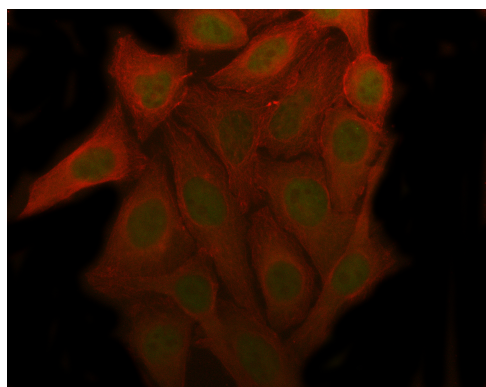
1:1000 and probed with a goat anti-rabbit IgG-HRP secondary antibody (Catalog # BA1054). The signal is developed using ECL Plus Western Blotting Substrate (Catalog # AR1197). A specific band was

detected for CDK1 at approximately 30 kDa. The expected band size for CDK1 is at 34 kDa.



IHC analysis of CDK1 using anti-CDK1 antibody (BM4062).

CDK1 was detected in a paraffin-embedded section of human colorectal adenocarcinoma tissue. The tissue section was incubated with rabbit anti-CDK1 Antibody (BM4062) at a dilution of 1:200 and developed using HRP Conjugated Rabbit IgG Super Vision Assay Kit (Catalog # SV0002) with DAB (Catalog # AR1027) as the chromogen.



ICC/IF analysis of CDK1 using anti-CDK1 antibody (BM4062) and anti-Beta Tubulin antibody (M01857-3).

CDK1 was detected in an immunocytochemical section of HeLa cells.

The section was incubated with rabbit anti-CDK1 Antibody (BM4062) at a dilution of 1:100. Fluoro488-conjugated Anti-rabbit IgG Secondary Antibody (green)(Catalog#BA1127) and Cy3-conjugated Anti-mouse IgG Secondary Antibody (red)(Catalog#BA1031) were used as secondary antibody.

Product datasheet

Anti-CDK1 Antibody (Clone#BOH-3)

Catalog Number: **BM4062**



antibody and ELISA experts

BOSTER BIOLOGICAL TECHNOLOGY

Building C21, 3rd to 5th Floors, Optics Valley Biopharmaceutical Accelerator,
East Lake High-Tech Development Zone, Wuhan.

Web: www.boster.com **Phone:** 027-67845390/1/2 **Email:** boster@boster.com