

## Basic Information

<b>Product Name</b>	Anti-Vinculin/VCL Antibody (Clone#AIG-22)	
<b>Gene Name</b>	VCL	
<b>Source</b>	Rabbit	
<b>Clonality</b>	Monoclonal	
<b>Isotype</b>	IgG	
<b>Species Reactivity</b>	human, mouse, rat	
<b>Tested Application</b>	WB, IHC, ICC/IF, IP	
<b>Contents</b>	500 ug/ml; Rabbit IgG in phosphate buffered saline, pH 7.4, 150mM NaCl, 0.02% sodium azide, 0.4-0.5 mg/ml BSA and 50% glycerol.	
<b>Immunogen</b>	A synthesized peptide derived from human Vinculin	
<b>Concentration</b>	500 ug/ml	
<b>Purification</b>	Affinity-chromatography	
<b>Observed MW</b>	124 kDa	
<b>Dilution Ratios</b>	Western blot (WB):	1:500-2000
	Immunohistochemistry (IHC):	1:50-200
	Immunocytochemistry/Immunofluorescence (ICC/IF):	1:50-200
	ImmunoPrecipitation (IP):	1:20

## Storage

12 months from date of receipt, -20°C as supplied.

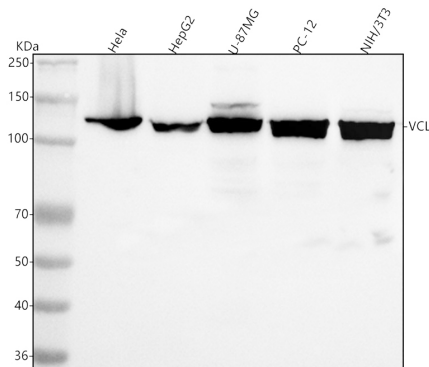
## Background Information

Vinculin is a cytoskeletal protein associated with the cytoplasmic face of both cell-cell and cell-extracellular matrix adherens-type junctions, where it is thought to function as one of several interacting proteins involved in anchoring F-actin to the membrane. Both human and chicken embryo sequences of vinculin contain 1,066 amino acids and, furthermore, that the 2 proteins exhibit a high level of sequence identity(greater than 95%). Vinculin is mapped to 10q22.1-q23.

## Reference

Anti-Vinculin/VCL Antibody (Clone#AIG-22)被引用在2文献中。

## Selected Validation Data



Western blot analysis of anti-Vinculin/VCL antibody (BM4051). The sample well of each lane was loaded with 30 ug of sample under reducing conditions.

Lane 1: human Hela whole cell lysates,

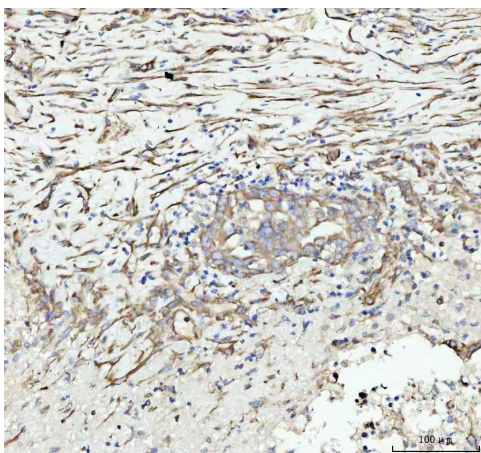
Lane 2: human HepG2 whole cell lysates,

Lane 3: human U-87 MG whole cell lysates,

Lane 4: rat PC-12 whole cell lysates,

Lane 5: mouse NIH/3T3 whole cell lysates.

After electrophoresis, proteins were transferred to a membrane. Then the membrane was incubated with rabbit anti-Vinculin/VCL antigen affinity purified monoclonal antibody (BM4051) at a dilution of 1:1000 and probed with a goat anti-rabbit IgG-HRP secondary antibody (Catalog # BA1054). The signal is developed using ECL Plus Western Blotting Substrate (Catalog # AR1197). A specific band was detected for Vinculin/VCL at approximately 124 kDa. The expected band size for Vinculin/VCL is at 124 kDa.



IHC analysis of Vinculin/VCL using anti-Vinculin/VCL antibody (BM4051) .

Vinculin/VCL was detected in a paraffin-embedded section of human colorectal adenocarcinoma tissue. The tissue section was incubated with rabbit anti-Vinculin/VCL Antibody (BM4051) at a dilution of 1:200 and developed using HRP Conjugated Rabbit IgG Super Vision Assay Kit (Catalog # SV0002) with DAB (Catalog # AR1027) as the chromogen.