

## Basic Information

<b>Product Name</b>	Anti-YY1 Antibody (Clone#AIE-25)		
<b>Gene Name</b>	YY1		
<b>Source</b>	Rabbit		
<b>Clonality</b>	Monoclonal		
<b>Isotype</b>	IgG		
<b>Species Reactivity</b>	human, mouse, rat		
<b>Tested Application</b>	WB, IHC, ICC/IF, IP		
<b>Contents</b>	500 ug/ml; Rabbit IgG in phosphate buffered saline, pH 7.4, 150mM NaCl, 0.02% sodium azide, 0.4-0.5 mg/ml BSA and 50% glycerol.		
<b>Immunogen</b>	A synthesized peptide derived from human YY1		
<b>Concentration</b>	500 ug/ml		
<b>Purification</b>	Affinity-chromatography		
<b>Observed MW</b>	65 kDa		
<b>Dilution Ratios</b>	Western blot (WB):	1:500-2000	
	Immunohistochemistry (IHC):	1:50-200	
	Immunocytochemistry/Immunofluorescence (ICC/IF):	1:50-200	
	ImmunoPrecipitation (IP):	1:20	

## Storage

12 months from date of receipt, -20°C as supplied.

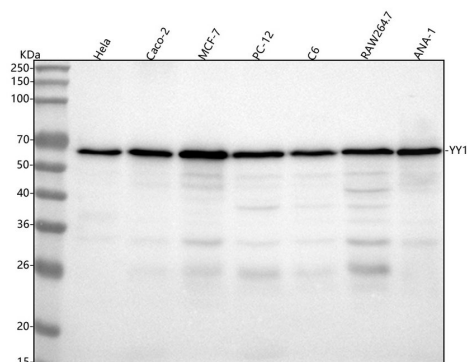
## Background Information

YY1 (Yin Yang 1) is a transcriptional repressor protein in humans that is encoded by the YY1 gene. YY1 is a ubiquitously distributed transcription factor belonging to the GLI-Kruppel class of zinc finger proteins. The protein is involved in repressing and activating a diverse number of promoters. YY1 may direct histone deacetylases and histone acetyltransferases to a promoter in order to activate or repress the promoter, thus implicating histone modification in the function of YY1.

## Reference

Anti-YY1 Antibody (Clone#AIE-25)被引用在1文献中。

## Selected Validation Data



Western blot analysis of anti-YY1 antibody (BM4049). The sample well of each lane was loaded with 30 ug of sample under reducing conditions.

Lane 1: human HeLa whole cell lysates,

Lane 2: human Caco-2 whole cell lysates,

Lane 3: human MCF-7 whole cell lysates,

Lane 4: rat PC-12 whole cell lysates,

Lane 5: rat C6 whole cell lysates,

Lane 6: mouse RAW264.7 whole cell lysates,

Lane 7: mouse ANA-1 whole cell lysates.

After electrophoresis, proteins were transferred to a membrane.

Then the membrane was incubated with rabbit anti-YY1 antigen

affinity purified monoclonal antibody (BM4049) at a dilution of

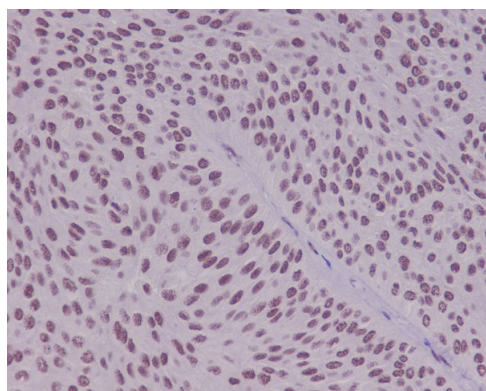
1:1000 and probed with a goat anti-rabbit IgG-HRP secondary

antibody (Catalog # BA1054). The signal is developed using ECL Plus

Western Blotting Substrate (Catalog # AR1197). A specific band was

detected for YY1 at approximately 68 kDa. The expected band size

for YY1 is at 45 kDa.



Immunohistochemical analysis of paraffin-embedded human bladder using YY1 Antibody.

Product datasheet

**Anti-YY1 Antibody (Clone#AIE-25)**

**Catalog Number: BM4049**



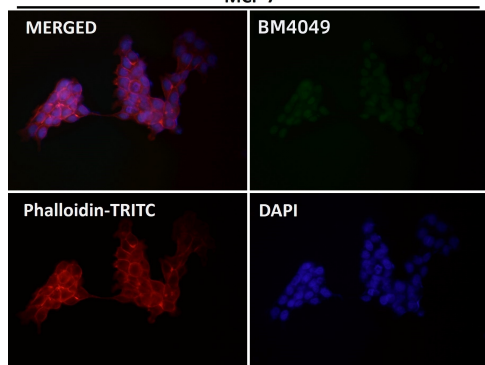
antibody and ELISA experts

**BOSTER BIOLOGICAL TECHNOLOGY**

Building C21, 3rd to 5th Floors, Optics Valley Biopharmaceutical Accelerator,  
East Lake High-Tech Development Zone, Wuhan.

**Web:** [www.boster.com](http://www.boster.com) **Phone:** 027-67845390/1/2 **Email:** [boster@boster.com](mailto:boster@boster.com)

MCF-7



Immunofluorescent analysis using the Antibody.