

Basic Information

Product Name	Anti-Collagen Type I/COL1A1 Antibody (Clone#AFD-3)
Gene Name	COL1A1
Source	Rabbit
Clonality	Monoclonal
Isotype	IgG
Species Reactivity	human, cow
Tested Application	WB, IHC
Contents	500 ug/ml; Rabbit IgG in phosphate buffered saline, pH 7.4, 150mM NaCl, 0.02% sodium azide, 0.4-0.5 mg/ml BSA and 50% glycerol.
Immunogen	A synthesized peptide derived from human Collagen I
Concentration	500 ug/ml
Purification	Affinity-chromatography
Observed MW	130,180-200
Dilution Ratios	Western blot (WB): 1:500-2000 Immunohistochemistry (IHC):1:50-200

Storage

12 months from date of receipt, -20°C as supplied.

Background Information

Collagen, type I, alpha 1, also known as COL1A1, is a human gene that encodes the major component of type I collagen, the fibrillar collagen found in most connective tissues, including cartilage. This gene is mapped to 17q21.33. This gene encodes the pro-alpha1 chains of type I collagen whose triple helix comprises two alpha1 chains and one alpha2 chain. Type I is a fibril-forming collagen found in most connective tissues and is abundant in bone, cornea, dermis and tendon. Mutations in this gene are associated with osteogenesis imperfecta types I-IV, Ehlers-Danlos syndrome type VIIA, Ehlers-Danlos syndrome Classical type, Caffey Disease and idiopathic osteoporosis.

Product datasheet

Anti-Collagen Type I/COL1A1 Antibody (Clone#AFD-3)

Catalog Number: **BM4017**

BOSTER[®]

antibody and ELISA experts

BOSTER BIOLOGICAL TECHNOLOGY

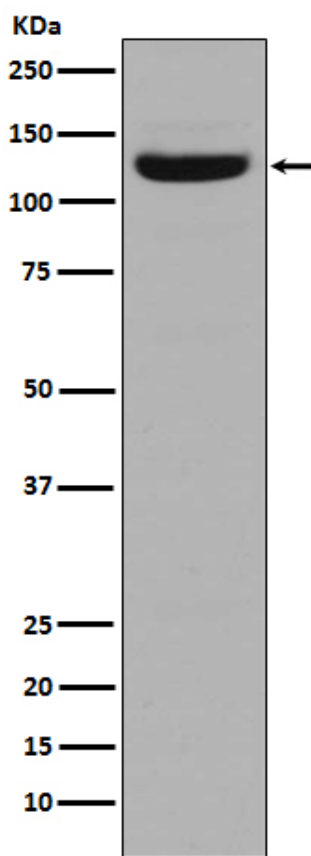
Building C21, 3rd to 5th Floors, Optics Valley Biopharmaceutical Accelerator,
East Lake High-Tech Development Zone, Wuhan.

Web: www.boster.com Phone: 027-67845390/1/2 Email: boster@boster.com

Reference

Anti-Collagen Type I/COL1A1 Antibody (Clone#AFD-3)被引用在9文献中。

Selected Validation Data



Western blot analysis of Collagen I in Human stomach tissue lysate.

Product datasheet

Anti-Collagen Type I/COL1A1 Antibody (Clone#AFD-3)

Catalog Number: **BM4017**

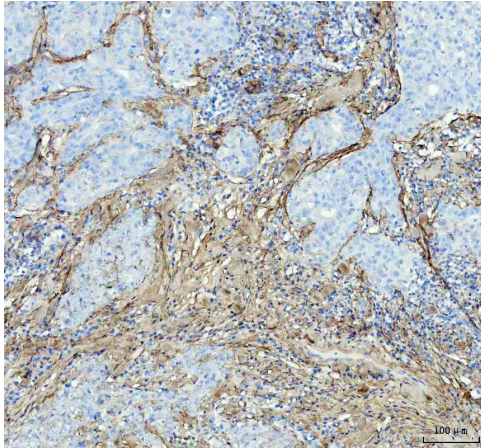
BOSTER[®]

antibody and ELISA experts

BOSTER BIOLOGICAL TECHNOLOGY

Building C21, 3rd to 5th Floors, Optics Valley Biopharmaceutical Accelerator,
East Lake High-Tech Development Zone, Wuhan.

Web: www.boster.com **Phone:** 027-67845390/1/2 **Email:** boster@boster.com



IHC analysis of Collagen Type I/COL1A1 using anti-Collagen Type I/COL1A1 antibody (BM4017) .

Collagen Type I/COL1A1 was detected in a paraffin-embedded section of human breast cancer tissue. The tissue section was incubated with rabbit anti-Collagen Type I/COL1A1 Antibody (BM4017) at a dilution of 1:200 and developed using HRP Conjugated Rabbit IgG Super Vision Assay Kit (Catalog # SV0002) with DAB (Catalog # AR1027) as the chromogen.