

## Basic Information

Product Name	Anti-Beta Actin/ACTB Antibody (Clone#BF-1)	
Gene Name	ACTB	
Source	Rabbit	
Clonality	Monoclonal	
Isotype	IgG	
Species Reactivity	human, mouse, rat, monkey, zebrafish	
Tested Application	WB, IHC, ICC/IF	
Contents	500 ug/ml; Rabbit IgG in phosphate buffered saline, pH 7.4, 150mM NaCl, 0.02% sodium azide, 0.4-0.5 mg/ml BSA and 50% glycerol.	
Immunogen	A synthesized peptide derived from human beta Actin	
Purification	Immunogen affinity purified.	
Observed MW	42 kDa(不适用于心肌样本的检测)	
Dilution Ratios	Western blot (WB):	1:2000-20000
	Immunohistochemistry (IHC):	1:50-200
	Immunocytochemistry/Immunofluorescence (ICC/IF):	1:50-200

## Storage

12 months from date of receipt, -20°C as supplied.

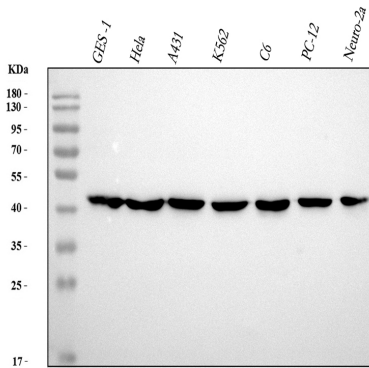
## Background Information

The primary site of action of cytochalasin B on cell motility processes is beta-actin. Habets et al.(1992) generated hybrids that harbor only specific regions of human chromosome 7 and assigned the ACTB locus to 7p15-p12. ACTB and the other assigned beta-actin-related sequences are dispersed over at least four different chromosomes including one locus assigned to the X chromosome. A mutation of beta-actin that alters depolymerization dynamics is associated with autosomal dominant developmental malformations, deafness, and dystonia.

## Reference

Anti-Beta Actin/ACTB Antibody (Clone#BF-1)被引用在211文献中。

## Selected Validation Data



Western blot analysis of anti-Beta Actin/ACTB antibody (BM3873).

The sample well of each lane was loaded with 30 ug of sample under reducing conditions.

Lane 1: human GES-1 whole cell lysates,

Lane 2: human Hela whole cell lysates,

Lane 3: human A431 whole cell lysates,

Lane 4: human K562 whole cell lysates,

Lane 5: rat C6 whole cell lysates,

Lane 6: mouse PC-12 whole cell lysates,

Lane 7: mouse Neuro-2a whole cell lysates.

After electrophoresis, proteins were transferred to a membrane.

Then the membrane was incubated with rabbit anti-Beta Actin/ACTB antigen affinity purified monoclonal antibody (BM3873) at a dilution of 1:1000 and probed with a goat anti-rabbit IgG-HRP secondary antibody (Catalog # BA1054). The signal is developed using ECL Plus Western Blotting Substrate (Catalog # AR1197). A specific band was detected for Beta Actin/ACTB at approximately 42 kDa. The expected band size for Beta Actin/ACTB is at 42 kDa.