

Basic Information

Product Name	Anti-CDK6 Antibody (Clone#DCS-90)		
Gene Name	CDK6		
Source	Mouse		
Clonality	Monoclonal		
Isotype	IgG1		
Species Reactivity	human, mouse, rat		
Tested Application	WB, ICC/IF		
Contents	200ug/ml antibody with PBS , 0.02% NaN ₃ , 1mg BSA and 50% glycerol.		
Immunogen	Recombinant human Cdk6 protein.		
Concentration	200ug/ml		
Purification	Ascites		
Observed MW	37 kDa		
Dilution Ratios	Western blot (WB):	1:500-2000	
	Immunocytochemistry/Immunofluorescence (ICC/IF):	1:50-400	

Storage

12 months from date of receipt, -20°C as supplied.

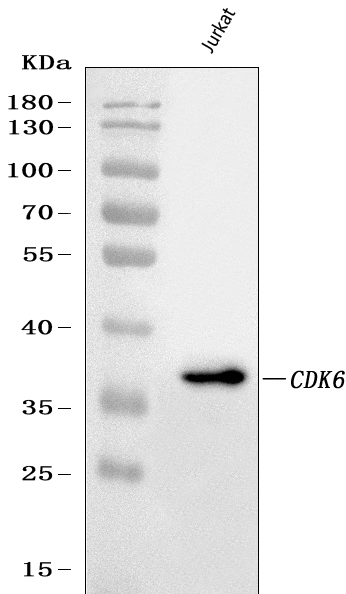
Background Information

The cyclin-dependent protein kinases(CDKs) regulate major cell cycle transitions in eukaryotic cells. Cyclin-dependent kinase-6(CDK6) is the earliest inducible member of the CDK family in human T lymphocytes, involved in growth factor stimulation and cell cycle progression. Germline mutations in CDK6 do not make a significant contribution to melanoma predisposition. CDK6 gene is mapped at 7q21-q22.

Reference

Anti-CDK6 Antibody (Clone#DCS-90)被引用在5文献中。

Selected Validation Data



Western blot analysis of anti- CDK6 antibody (BM1616). The sample well of each lane was loaded with 50ug of sample under reducing conditions.

Lane 1: Jurkat whole cell lysates.

Use mouse anti- CDK6 1:1000, probed with a goat anti-mouse IgG- HRP secondary antibody. The signal is developed using an Enhanced Chemiluminescent detection (ECL) kit (Catalog # EK1001). A specific band was detected for CDK6 at approximately 37KD. The expected band size for CDK6 is at 37KD.