

Basic Information

Product Name	Anti-Cyclin D2/CCND2 Antibody (Clone#DCS-3)
Gene Name	CCND2
Source	Mouse
Clonality	Monoclonal
Isotype	IgG2a
Species Reactivity	human, mouse
Tested Application	WB, ICC/IF
Contents	200ug/ml antibody with PBS , 0.02% NaN ₃ , 1mg BSA and 50% glycerol.
Immunogen	Recombinant human cyclin D2 protein.
Concentration	200ug/ml
Purification	Ascites
Observed MW	33 kDa
Dilution Ratios	Western blot (WB): 1:500-2000 Immunocytochemistry/Immunofluorescence (ICC/IF):1:50-400

Storage

12 months from date of receipt, -20°C as supplied.

Background Information

Inaba et al.(1992) used murine cDNA clones for 3 cyclin D genes that are normally expressed during the G1 phase of the cell cycle to clone the cognate human genes. D-type cyclins(cyclins D1, D2, and D3) are regarded as essential links between cell environment and the core cell cycle machinery. cyclin D2(CCND2) gene is assigned to 12p13.

Reference

Anti-Cyclin D2/CCND2 Antibody (Clone#DCS-3)被引用在5文献中。

Product datasheet
Anti-Cyclin D2/CCND2 Antibody
(Clone#DCS-3)
Catalog Number: BM1583

BOSTER[®]

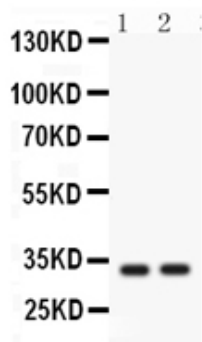
antibody and ELISA experts

BOSTER BIOLOGICAL TECHNOLOGY

Building C21, 3rd to 5th Floors, Optics Valley Biopharmaceutical Accelerator,
East Lake High-Tech Development Zone, Wuhan.

Web: www.boster.com **Phone:** 027-67845390/1/2 **Email:** boster@boster.com

Selected Validation Data



CCND2(BM1583)(MW:33KD)小鼠睾丸组织, Hela细胞裂解, 免疫印迹分析.