

Basic Information

Product Name	Anti-Cyclin A2/CCNA2 Antibody (Clone#CY-A1)		
Gene Name	CCNA2		
Source	Mouse		
Clonality	Monoclonal		
Isotype	IgG2a		
Species Reactivity	human, mouse, bovine		
Tested Application	WB, ICC/IF		
Contents	200ug/ml antibody with PBS , 0.02% NaN ₃ , 1mg BSA and 50% glycerol.		
Immunogen	Recombinant bovine cyclin A.		
Concentration	200ug/ml		
Purification	Ascites		
Observed MW	55 kDa		
Dilution Ratios	Western blot (WB):	1:500-2000	
	Immunocytochemistry/Immunofluorescence (ICC/IF):	1:50-400	

Storage

12 months from date of receipt, -20°C as supplied.

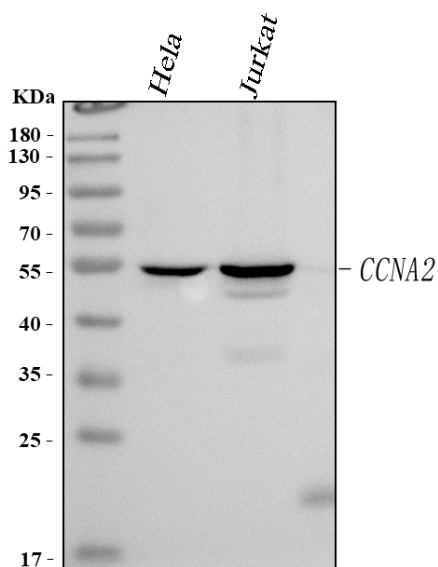
Background Information

The mammalian A-type cyclin family consists of 2 members, cyclin A1(CCNA1) and cyclin A2(CCNA2). Human cyclin A gene is assigned to 4q26-q27. Cyclin A protein is synthesized and localized into the nucleus at the onset of S phase in nontransformed mammalian fibroblasts.

Reference

Anti-Cyclin A2/CCNA2 Antibody (Clone#CY-A1)被引用在12文献中。

Selected Validation Data

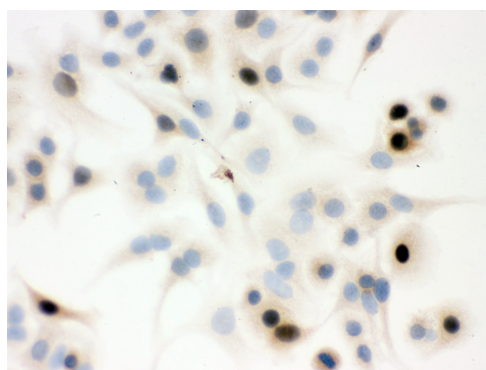


Western blot analysis of anti- CCNA2 antibody (BM1582). The sample well of each lane was loaded with 50ug of sample under reducing conditions.

Lane 1: HeLa whole cell lysates,

Lane 2: Jurkat whole cell lysates.

Use mouse anti- CCNA2 1:1000, probed with a goat anti-mouse IgG-HRP secondary antibody. The signal is developed using an Enhanced Chemiluminescent detection (ECL) kit (Catalog # EK1002). A specific band was detected for CCNA2 at approximately 55KD. The expected band size for CCNA2 is at 49KD.



ICC: A549 Cell