

## Basic Information

Product Name	Anti-HSP60/HSPD1 Antibody (Clone#LK1)	
Gene Name	HSPD1	
Source	Mouse	
Clonality	Monoclonal	
Isotype	IgG1	
Species Reactivity	human, mouse, rat, chicken	
Tested Application	WB, IHC	
Contents	200ug/ml antibody with PBS , 0.02% NaN <sub>3</sub> , 1mg BSA and 50% glycerol.	
Immunogen	Recombinant human heat shock protein 60(HSP60)	
Concentration	200 ug/ml	
Purification	Ascites	
Observed MW	60 kDa	
Dilution Ratios	Western blot (WB): 1:500-2000 Immunohistochemistry (IHC): 1:50-400 (Boiling the paraffin sections in 10mM citrate buffer,pH6.0,or PH8.0 EDTA repair liquid for 20 mins is required for the staining of formalin/paraffin sections.) Optimal working dilutions must be determined by end user.	

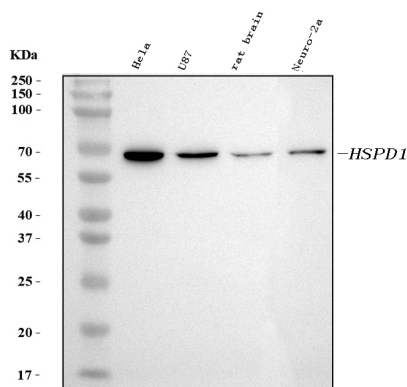
## Storage

12 months from date of receipt, -20°C as supplied.

## Background Information

Heat shock 60KD protein(HSP60) is a member of the chaperonin class of protein factors and the nuclear encoded mitochondrial HSP60 is required for the assembly into oligomeric complexes of proteins imported into the mitochondrial matrix. HSP60 is linked head to head comprising approximately 17 kb and consist of 12 exons. HSP60 is a self-molecule, it can downregulate adaptive immune responses by upregulating Tregs innately through TLR2 signaling.

## Selected Validation Data



Western blot analysis of anti- HSPD1 antibody (BM1511).The sample well of each lane was loaded with 50ug of sample under reducing conditions.

Lane 1:Human HELA whole cell lysates,

Lane 2:U87 whole cell lysates,

Lane 3: Rat brain tissue lysates,

Lane 4: Neuro-2a whole cell lysates.

Use mouse anti- HSPD1 1:1000, probed with a goat anti-mouse IgG-HRP secondary antibody. The signal is developed using an Enhanced Chemiluminescent detection (ECL) kit (Catalog # EK1001). A specific band was detected for HSPD1 at approximately 68KD. The expected band size for HSPD1 is at 61KD.