

Basic Information

Product Name	Anti-Beta Tubulin/TUBB Antibody (Clone#TUB2.1)		
Gene Name	TUBB		
Source	Mouse		
Clonality	Monoclonal		
Isotype	IgG1		
Species Reactivity	human, mouse, rat		
Tested Application	WB, IHC, ICC/IF		
Contents	200 ug/ml antibody with PBS , 0.02% NaN ₃ , 1mg BSA and 50% glycerol.		
Immunogen	Tubulin from rat brain.		
Purification	Ascites		
Observed MW	55 kDa		
Dilution Ratios	Western blot (WB): 1:500-2000 Immunohistochemistry (IHC): 1:50-400 Immunocytochemistry/Immunofluorescence (ICC/IF): 1:50-400 (Boiling the paraffin sections in 10mM citrate buffer,pH6.0,or PH8.0 EDTA repair liquid for 20 mins is required for the staining of formalin/paraffin sections.) Optimal working dilutions must be determined by end user.		

Storage

12 months from date of receipt, -20°C as supplied.

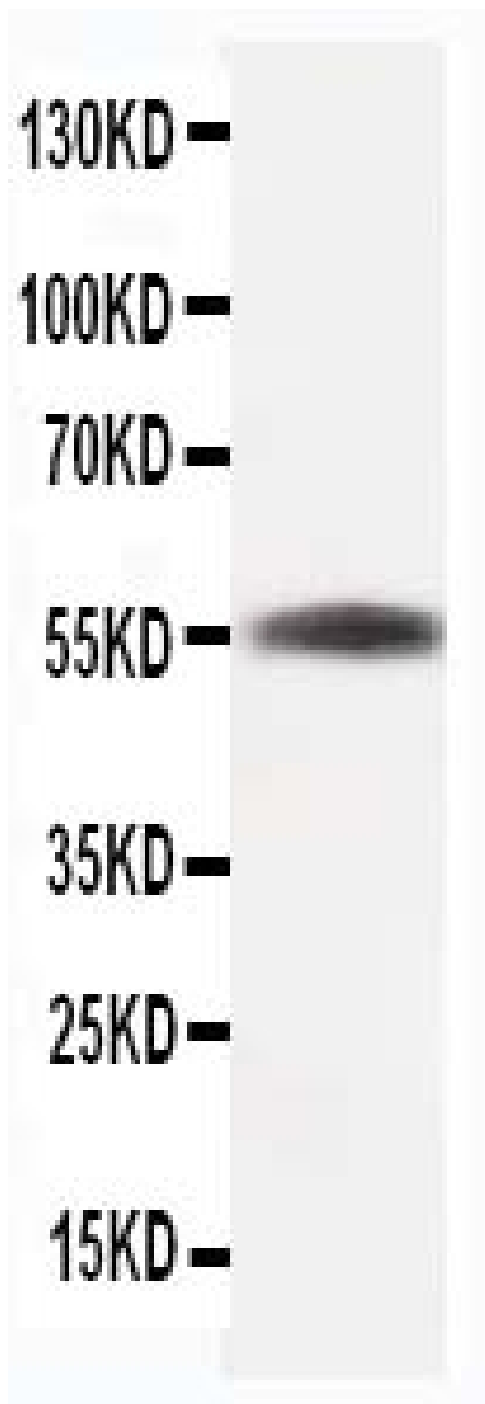
Background Information

Tubulin beta(TUBB) was derived from its corresponding mRNA with a molecular weight of about 55,000. TUBB gene contains 4 exons and located in the HLA class I region at 6p21.3. Paclitaxel resistance in non-small-cell lung cancer associated with beta-tubulin gene mutations.

Reference

Anti-Beta Tubulin/TUBB Antibody (Clone#TUB2.1)被引用在37文献中。

Selected Validation Data

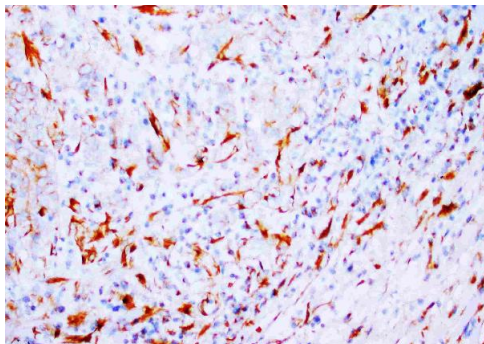


Anti-Beta Tubulin/TUBB antibody (monoclonal), BM1453, Western blotting

WB: Rat Skeletal Muscle Tissue Lysate

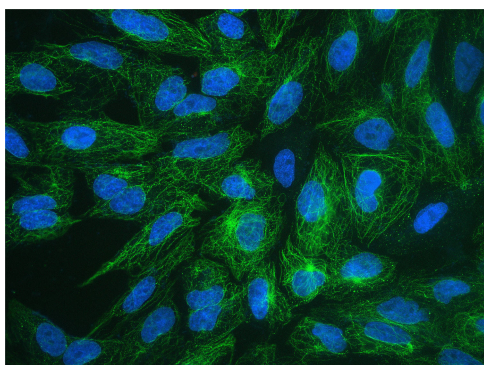
Anti-Beta Tubulin/TUBB Antibody (Clone#TUB2.1)

Catalog Number: BM1453



Anti-Beta Tubulin/TUBB antibody (monoclonal), BM1453, IHC(P)

IHC(P): Human Mammary Cancer Tissue



ICC analysis using anti-Beta Tubulin/TUBB antibody (BM1453) was detected in immersion fixed A549 cell line . Cells were stained using the Fluoro488-conjugated Anti-mouse IgG Secondary Antibody (green)(Catalog#BA1126) and counterstained with DAPI (blue).