

Basic Information

Product Name	Anti-BrdU Antibody	
Source	Mouse	
Clonality	Monoclonal	
Isotype	IgG	
Species Reactivity	human, mouse, rat, rabbit	
Tested Application	IHC	
Contents	200ug/ml antibody with PBS , 0.02% NaN ₃ , 1mg BSA and 50% glycerol.	
Immunogen	Polypeptide	
Purification	Immunogen affinity purified.	
Dilution Ratios	Western blot (WB):	1:500-2000
	Immunohistochemistry (IHC):	1:50-400
	Immunocytochemistry in fixed cells (ICC):	1:50-400
	Immunohistochemistry in frozen section (IHC-F):	1:50-400
	(Boiling the paraffin sections in 10mM citrate buffer,pH6.0,or PH8.0 EDTA repair liquid for 20 mins is required for the staining of formalin/paraffin sections.) Optimal working dilutions must be determined by end user.	

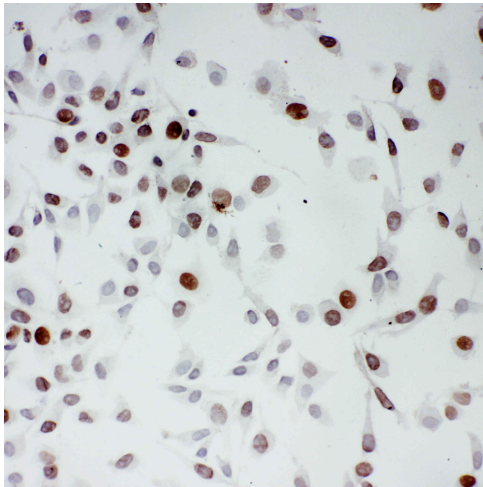
Storage

12 months from date of receipt, -20°C as supplied.

Reference

Anti-BrdU Antibody被引用在72文献中。

Selected Validation Data



IHC analysis using anti-BrdU antibody (BM0201). detected in paraffin-embedded section of HELA cells. Biotinylated goat anti-mouse IgG was used as secondary antibody. The tissue section was developed using Streptavidin-Biotin-Complex (SABC) (Catalog # SA1022) with DAB as the chromogen.