

Basic Information

Product Name	Anti-CD68 Antibody	
Gene Name	CD68	
Source	Rabbit	
Clonality	Polyclonal	
Isotype	IgG	
Species Reactivity	human	
Tested Application	WB, IHC	
Contents	500 ug/ml antibody with PBS, 0.02% NaN3, 1 mg/ml BSA and 50% glycerol.	
Immunogen	A synthetic peptide corresponding to a sequence at the C-terminus of human CD68.	
Concentration	500 ug/ml	
Purification	Immunogen affinity purified.	
Observed MW	37,75-100 kDa	
Dilution Ratios	Western blot (WB): 1:500-2000 Immunohistochemistry (IHC): 1:50-400 (Boiling the paraffin sections in 10mM citrate buffer,pH6.0,or PH8.0 EDTA repair liquid for 20 mins is required for the staining of formalin/paraffin sections.) Optimal working dilutions must be determined by end user.	

Storage

12 months from date of receipt, -20°C as supplied.

Background Information

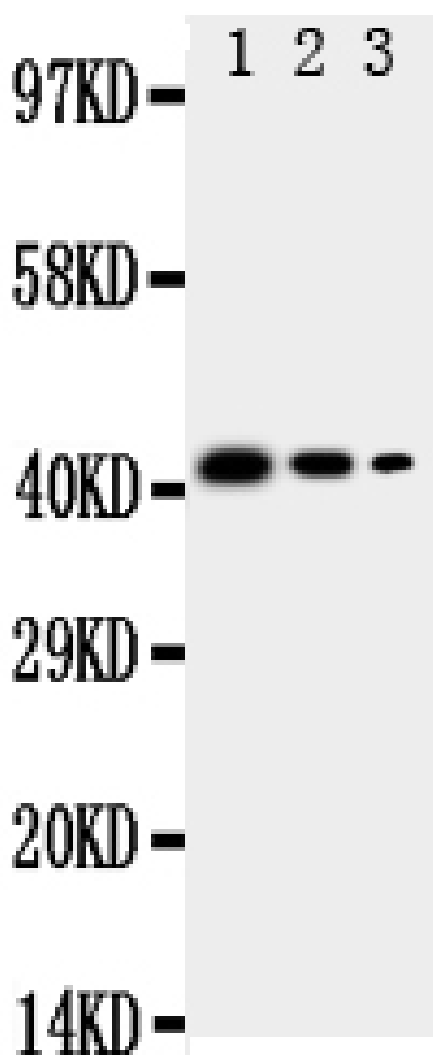
CD68, cluster of differentiation, is a 110-kD transmembrane glycoprotein that is highly expressed by human monocytes and tissue macrophages. CD68 is a member of a family of hematopoietic mucin-like molecules that includes leukosialin/CD43 and stem cell antigen CD34. The CD68 gene is mapped to 17p13.1. Immunohistochemistry can be used to identify the presence of CD68, which is found in the cytoplasmic granules of a range of different blood cells. It is particularly useful as a marker for the various cells of the macrophage lineage, including monocytes, histiocytes, giant cells, Kupffer cells, and osteoclasts. This allows it to be used to distinguish diseases of otherwise similar appearance, such as the monocyte/macrophage and lymphoid forms of leukaemia(the latter being CD68 negative). Its presence in macrophages also makes it useful in diagnosing conditions related to proliferation or abnormality of these cells, such as

malignant histiocytosis, histiocytic lymphoma, and Gaucher's disease.

Reference

Anti-CD68 Antibody 被引用在8文献中。

Selected Validation Data



Western blot analysis of CD68 using anti-CD68 antibody (BA3639).

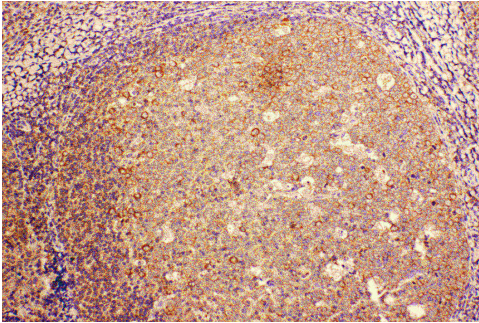
Lane 1: recombinant Human CD68 Protein 10ng,

Lane 2: recombinant Human CD68 Protein 5ng,

Lane 3: recombinant Human CD68 Protein 2.5ng.

After electrophoresis, proteins were transferred to a membrane.

Then the membrane was incubated with rabbit anti-CD68 antigen affinity purified polyclonal antibody (BA3639) at a dilution of 1:1000 and probed with a goat anti-rabbit IgG-HRP secondary antibody (Catalog # BA1054). The signal is developed using ECL Plus Western Blotting Substrate (Catalog # AR1197). A specific band was detected for CD68 at approximately 42.5 kDa.



IHC analysis of CD68 using anti-CD68 antibody (BA3639).

CD68 was detected in a paraffin-embedded section of human tonsil tissue. The tissue section was incubated with rabbit anti-CD68 Antibody (BA3639) at a dilution of 1:200 and developed using HRP Conjugated Rabbit IgG Super Vision Assay Kit (Catalog # SV0002) with DAB (Catalog # AR1027) as the chromogen.