

Basic Information

Product Name	Anti-Beclin 1/BECN1 Antibody
Gene Name	BECN1
Source	Rabbit
Clonality	Polyclonal
Isotype	IgG
Species Reactivity	human, mouse, rat
Tested Application	WB
Contents	500 ug/ml antibody with PBS, 0.02% NaN ₃ , 1 mg/ml BSA and 50% glycerol.
Immunogen	A synthetic peptide corresponding to a sequence in the middle region of human Beclin 1, identical to the related rat and mouse sequences.
Concentration	500 ug/ml
Purification	Immunogen affinity purified.
Observed MW	52-60 kDa
Dilution Ratios	Western blot (WB):1:500-2000

Storage

12 months from date of receipt, -20°C as supplied.

Background Information

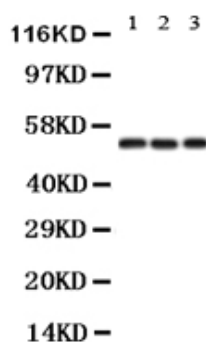
Bellini-1 (beclin 1, autophagy related) is a protein that in humans is encoded by the BECN1 gene, also known as BECN1, ATG6, VPS30, Coiled-coil myosin-like BCL2-interacting protein, Protein GT197, autophagy-related gene (Atg) 6. Beclin-1 and its binding partner class III phosphoinositide 3-kinase (PI3K), also named Vps34, are required for the initiation of the formation of the autophagosome in autophagy. Human beclin encodes a novel 450-amino acid protein containing a coiled-coil region, within which it has limited homology to myosin-like proteins. Northern blot analysis of mouse and adult human tissues revealed widespread beclin expression. A 2.2-kb transcript was present at highest levels in human skeletal muscle and at detectable levels in all tissues examined. In some tissues, additional 1.7- and 1.4-kb transcripts were observed, suggesting the presence of alternatively spliced transcripts. Immunoperoxidase staining of human hippocampus and frontal cortex sections revealed beclin immunoreactivity in many neurons throughout these regions, as well as in some glial cells. Beclin protects against infection by a neurovirulent strain of Sindbis virus that is known to

overcome the protective effects of Bcl2. Liang et al. showed that beclin reduced Sindbis virus replication in mouse brain and reduced Sindbis virus-induced cell death in mouse brain.

Reference

Anti-Beclin 1/BECN1 Antibody被引用在8文献中。

Selected Validation Data



Western blot analysis of Beclin 1/BECN1 using anti-Beclin 1/BECN1 antibody (BA3123-2). The sample well of each lane was loaded with 30 ug of sample under reducing conditions.

Lane 1: human Hela whole cell lysates,

Lane 2: human SW620 whole cell lysates,

Lane 3: human PANC-1 whole cell lysates.

After electrophoresis, proteins were transferred to a membrane.

Then the membrane was incubated with rabbit anti-Beclin 1/BECN1 antigen affinity purified polyclonal antibody (BA3123-2) at a dilution of 1:1000 and probed with a goat anti-rabbit IgG-HRP secondary antibody (Catalog # BA1054). The signal is developed using ECL Plus Western Blotting Substrate (Catalog # AR1197). A specific band was detected for Beclin 1/BECN1 at approximately 52-60 kDa. The expected band size for Beclin 1/BECN1 is at 52 kDa.