

Basic Information

Product Name	Anti-Lamin B1/LMNB1 Antibody	
Gene Name	LMNB1	
Source	Rabbit	
Clonality	Polyclonal	
Isotype	IgG	
Species Reactivity	human, mouse, rat	
Tested Application	WB, IHC, IF, ICC/IF, IP	
Contents	500 ug/ml antibody with PBS, 0.02% NaN ₃ , 1 mg/ml BSA and 50% glycerol.	
Immunogen	A synthetic peptide corresponding to a sequence at the C-terminus of human Lamin B1, different from the related rat sequence by one amino acid, and from the related mouse sequence by three amino acids.	
Purification	Immunogen affinity purified.	
Observed MW	70-72 kDa	
Dilution Ratios	Western blot (WB): 1:500-2000 Immunohistochemistry (IHC): 1:50-400 Immunofluorescence (IF): 1:50-400 Immunocytochemistry/Immunofluorescence (ICC/IF): 1:50-400 ImmunoPrecipitation (IP): 1:250-300 (Boiling the paraffin sections in 10mM citrate buffer, pH6.0, or PH8.0 EDTA repair liquid for 20 mins is required for the staining of formalin/paraffin sections.) Optimal working dilutions must be determined by end user.	

Storage

12 months from date of receipt, -20°C as supplied.

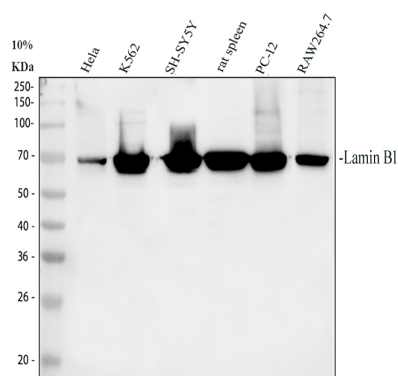
Background Information

Lamin-B1 is a protein that in humans is encoded by the LMNB1 gene. The nuclear lamina consists of a two-dimensional matrix of proteins located next to the inner nuclear membrane. The lamin family of proteins make up the matrix and are highly conserved in evolution. During mitosis, the lamina matrix is reversibly disassembled as the lamin proteins are phosphorylated. Lamin proteins are thought to be involved in nuclear stability, chromatin structure and gene expression. Vertebrate lamins consist of two types, A and B. This gene encodes one of the two B type proteins, B1.

Reference

Anti-Lamin B1/LMNB1 Antibody被引用在40文献中。

Selected Validation Data



Western blot analysis of Lamin B1/LMNB1 using anti-Lamin B1/LMNB1 antibody (BA1228). The sample well of each lane was loaded with 30 ug of sample under reducing conditions.

Lane 1: human Hela whole cell lysates,

Lane 2: human K562 whole cell lysates,

Lane 3: human SH-SY5Y whole cell lysates,

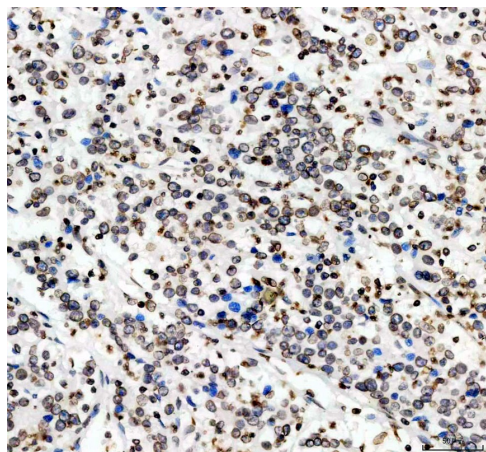
Lane 4: rat spleen tissue lysates,

Lane 5: rat PC-12 whole cell lysates,

Lane 6: mouse RAW264.7 whole cell lysates.

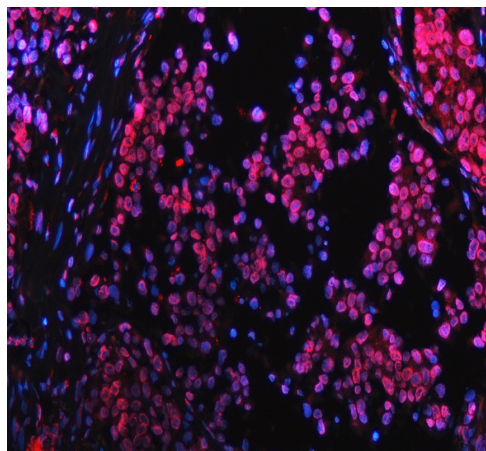
After electrophoresis, proteins were transferred to a membrane.

Then the membrane was incubated with rabbit anti-Lamin B1/LMNB1 antigen A03957-Aen affinity purified polyclonal antibody (BA1228) at a dilution of 1:1000 and probed with a goat anti-rabbit IgG-HRP secondary antibody (Catalog # BA1054). The signal is developed using ECL Plus Western Blotting Substrate (Catalog # AR1197). A specific band was detected for Lamin B1/LMNB1 at approximately 70-72 kDa. The expected band size for Lamin B1/LMNB1 is at 66 kDa.



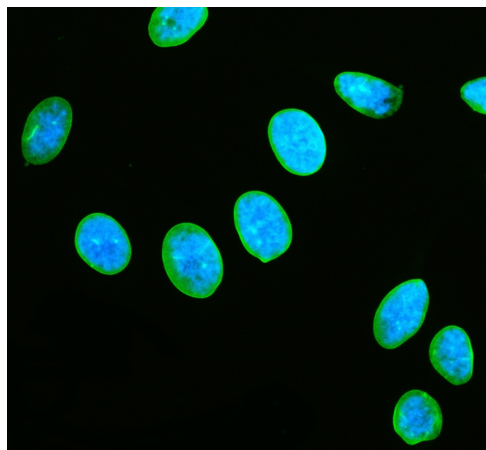
IHC analysis of Lamin B1/LMNB1 using anti-Lamin B1/LMNB1 antibody (BA1228).

Lamin B1/LMNB1 was detected in a paraffin-embedded section of human breast cancer tissue. The tissue section was incubated with rabbit anti-Lamin B1/LMNB1 Antibody (BA1228) at a dilution of 1:200 and developed using HRP Conjugated Rabbit IgG Super Vision Assay Kit (Catalog # SV0002) with DAB (Catalog # AR1027) as the chromogen.



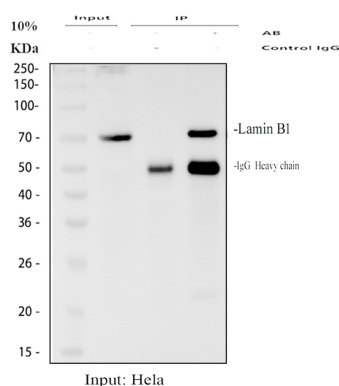
IF analysis of Lamin B1/LMNB1 using anti-Lamin B1/LMNB1 antibody (BA1228).

Lamin B1/LMNB1 was detected in a paraffin-embedded section of human lung cancer tissue. The tissue section was incubated with rabbit anti-Lamin B1/LMNB1 Antibody (BA1228) at a dilution of 1:100. Cy3-conjugated Anti-rabbit IgG Secondary Antibody (red) (Catalog # BA1032) was used as secondary antibody. The section was counterstained with DAPI (Catalog # AR1176) (Blue).



ICC/IF analysis of Lamin B1/LMNB1 using anti-Lamin B1/LMNB1 antibody (BA1228).

Lamin B1/LMNB1 was detected in an immunocytochemical section of U2OS cells. The section was incubated with rabbit anti-Lamin B1/LMNB1 Antibody (BA1228) at a dilution of 1:100. Fluoro488 Conjugated Goat Anti-Rabbit IgG (Green) (Catalog # BA1127) was used as secondary antibody. The section was counterstained with DAPI (Catalog # AR1176) (Blue).



IP analysis of Lamin B1/LMNB1 using anti-Lamin B1/LMNB1 antibody (BA1228) in HeLa whole cell lysate.

Western blot analysis of Lamin B1/LMNB1 using anti- Lamin B1/LMNB1 antibody (BA1228).

Lane 1: HeLa whole cell lysates(30ug),

Lane 2: Rabbit control IgG instead of anti- Lamin B1/LMNB1 antibody in HeLa whole cell lysate,

Lane 3: anti- Lamin B1/LMNB1 antibody (2μg) + HeLa whole cell lysate (500μg).

After electrophoresis, proteins were transferred to a membrane.

Then the membrane was incubated with rabbit anti- Lamin B1/LMNB1 antigen affinity purified polyclonal antibody (BA1228) at a dilution of 1:1000 and probed with a goat anti-rabbit IgG-HRP

secondary antibody (Catalog # BA1054). The signal is developed using ECL Plus Western Blotting Substrate (Catalog # AR1197). A specific band was detected for Lamin B1/LMNB1 at approximately 70 kDa. The expected band size for Lamin B1/LMNB1 is at 66 kDa.