

Basic Information

Product Name	Anti-BCL2 Antibody	
Gene Name	BCL2	
Source	Rabbit	
Clonality	Polyclonal	
Isotype	IgG	
Species Reactivity	human, mouse, rat, rabbit	
Tested Application	WB, IHC	
Contents	500 ug/ml antibody with PBS, 0.02% NaN ₃ , 1 mg/ml BSA and 50% glycerol.	
Immunogen	A synthetic peptide corresponding to a sequence in the middle region of human Bcl-2 identical to the related mouse and rat sequences.	
Concentration	500 ug/ml	
Purification	Immunogen affinity purified.	
Observed MW	26 kDa	
Dilution Ratios	Western blot (WB): 1:500-2000 Immunohistochemistry (IHC): 1:50-400 (Boiling the paraffin sections in 10mM citrate buffer,pH6.0,or PH8.0 EDTA repair liquid for 20 mins is required for the staining of formalin/paraffin sections.) Optimal working dilutions must be determined by end user.	

Storage

12 months from date of receipt, -20°C as supplied.

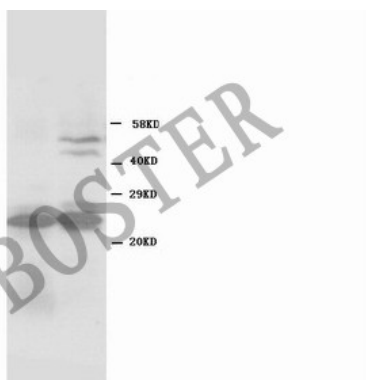
Background Information

Immunoreactive BCL2 protein in the neoplastic cells of almost all follicular lymphomas whereas no BCL2 protein was detected in follicles affected by nonneoplastic processes or in normal lymphoid tissue. Every tumor with molecular-genetic evidence of t(14;18) translocation expressed detectable levels of BCL2 protein, regardless of whether the breakpoint was located in or at a distance from the BCL2 gene. Overexpression of BCL2 blocks the apoptotic death of a pro-B-lymphocyte cell line.

Reference

Anti-BCL2 Antibody被引用在269文献中。

Selected Validation Data



Western blot analysis of BCL2 using anti-BCL2 antibody (BA0412).

The sample well of each lane was loaded with 30 ug of sample under reducing conditions.

Lane 1: rat liver tissue lysates,

Lane 2: rat spleen tissue lysates.

After electrophoresis, proteins were transferred to a membrane.

Then the membrane was incubated with rabbit anti-BCL2 antigen

affinity purified polyclonal antibody (BA0412) at a dilution of 1:1000

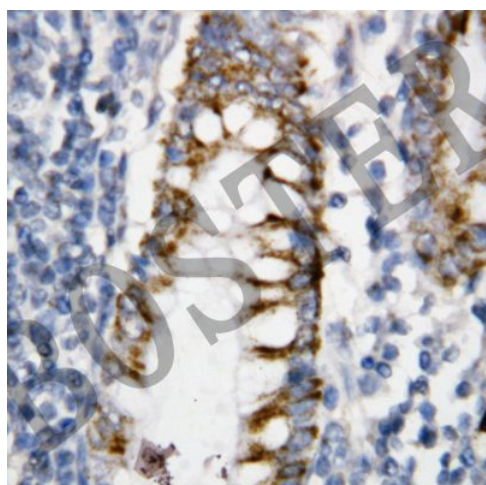
and probed with a goat anti-rabbit IgG-HRP secondary antibody

(Catalog # BA1054). The signal is developed using ECL Plus Western

Blotting Substrate (Catalog # AR1197). A specific band was detected

for BCL2 at approximately 26 kDa. The expected band size for BCL2

is at 26 kDa.



IHC analysis of BCL2 using anti-BCL2 antibody (BA0412).

BCL2 was detected in a paraffin-embedded section of human rectal

cancer tissue. Biotinylated goat anti-rabbit IgG was used as

secondary antibody. The tissue section was incubated with rabbit

anti-BCL2 Antibody (BA0412) at a dilution of 1:200 and developed

using Streptavidin-Biotin-Complex (SABC) (Catalog # SA1022) with

DAB (Catalog # AR1027) as the chromogen.