

Basic Information

Product Name	Anti-Collagen Type I/COL1A1 Antibody	
Gene Name	COL1A1	
Source	Rabbit	
Clonality	Polyclonal	
Isotype	IgG	
Species Reactivity	human, mouse, rat	
Tested Application	WB, IHC, IF, ICC/IF	
Contents	500 ug/ml antibody with PBS, 0.02% NaN ₃ , 1 mg/ml BSA and 50% glycerol.	
Immunogen	A synthetic peptide corresponding to a sequence at the C-terminus of mouse Collagen I, identical to the related rat sequence, and different from the related human sequence by two amino acids.	
Concentration	500 ug/ml	
Purification	Immunogen affinity purified.	
Observed MW	130/220/250 kDa	
Dilution Ratios	Western blot (WB):	1:500-2000
	Immunohistochemistry (IHC):	1:200-1000
	Immunofluorescence (IF):	1:50-400
	Immunocytochemistry/Immunofluorescence (ICC/IF):	1:50-400
	(Boiling the paraffin sections in 10mM citrate buffer,pH6.0,or PH8.0 EDTA repair liquid for 20 mins is required for the staining of formalin/paraffin sections.) Optimal working dilutions must be determined by end user.	

Storage

12 months from date of receipt, -20°C as supplied.

Background Information

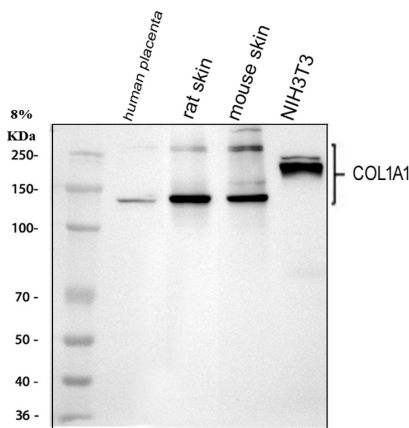
Collagen, type I, alpha 1, also known as COL1A1, is a human gene that encodes the major component of type I collagen, the fibrillar collagen found in most connective tissues, including cartilage. This gene is mapped to 17q21.33. This gene encodes the pro-alpha1 chains of type I collagen whose triple helix comprises two alpha1 chains and one alpha2 chain. Type I is a fibril-forming collagen found in most connective tissues and is abundant in bone, cornea, dermis and tendon. Mutations in this gene are associated with osteogenesis imperfecta types I-IV, Ehlers-Danlos syndrome type VIIA, Ehlers-

Danlos syndrome Classical type, Caffey Disease and idiopathic osteoporosis.

Reference

Anti-Collagen Type I/COL1A1 Antibody 被引用在219文献中。

Selected Validation Data



Western blot analysis of Collagen Type I/COL1A1 using anti-Collagen Type I/COL1A1 antibody (BA0325). The sample well of each lane was loaded with 30 ug of sample under reducing conditions.

Lane 1: human placenta tissue lysates,

Lane 2: rat skin tissue lysates,

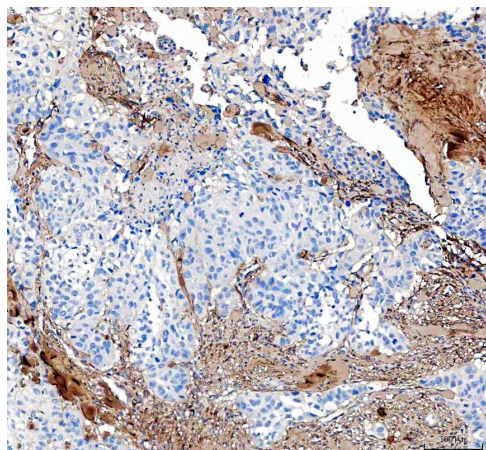
Lane 3: mouse skin tissue lysates,

Lane 4: mouse NIH/3T3 whole cell lysates.

After electrophoresis, proteins were transferred to a membrane.

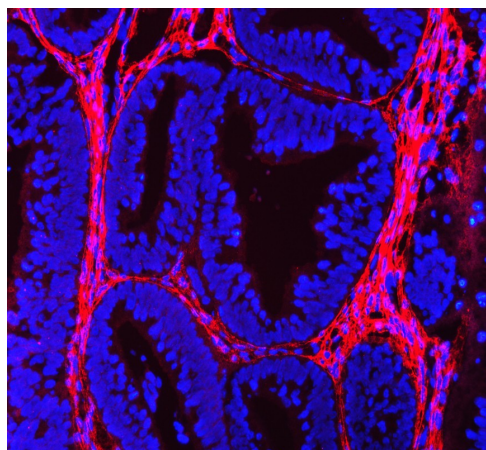
Then the membrane was incubated with rabbit anti-Collagen Type I/COL1A1 antigen affinity purified polyclonal antibody (BA0325) at a dilution of 1:1000 and probed with a goat anti-rabbit IgG-HRP secondary antibody (Catalog # BA1054). The signal is developed using ECL Plus Western Blotting Substrate (Catalog # AR1197). A specific band was detected for Collagen Type I/COL1A1 at

approximately 130/220/250 kDa. The expected band size for Collagen Type I/COL1A1 is at 138 kDa.



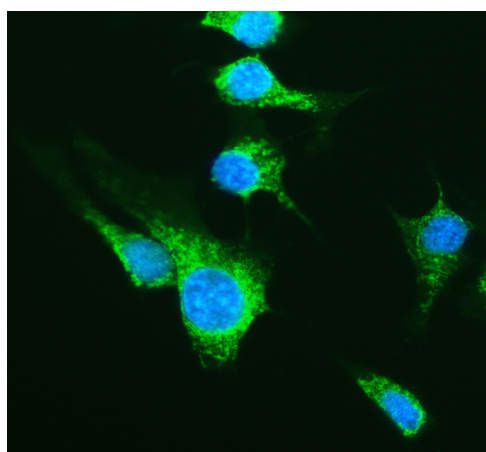
IHC analysis of Collagen Type I/COL1A1 using anti-Collagen Type I/COL1A1 antibody (BA0325) .

Collagen Type I/COL1A1 was detected in a paraffin-embedded section of human bladder cancer tissue. The tissue section was incubated with rabbit anti-Collagen Type I/COL1A1 Antibody (BA0325) at a dilution of 1:200 and developed using HRP Conjugated Rabbit IgG Super Vision Assay Kit (Catalog # SV0002) with DAB (Catalog # AR1027) as the chromogen.



IF analysis of Collagen Type I/COL1A1 using anti-Collagen Type I/COL1A1 antibody (BA0325).

Collagen Type I/COL1A1 was detected in a paraffin-embedded section of human endometrial cancer tissue. The tissue section was incubated with rabbit anti-Collagen Type I/COL1A1 Antibody (BA0325) at a dilution of 1:100. Fluoro550-conjugated Anti-rabbit IgG Secondary Antibody (red)(Catalog#BA1135) was used as secondary antibody. The section was counterstained with DAPI (Catalog # AR1176) (Blue).



ICC/IF analysis of Collagen Type I/COL1A1 using anti-Collagen Type I/COL1A1 antibody (BA0325).

Collagen Type I/COL1A1 was detected in an immunocytochemical section of NIH/3T3 cells. The section was incubated with rabbit anti-Collagen Type I/COL1A1 Antibody (BA0325) at a dilution of 1:100. Fluoro488 Conjugated Goat Anti-Rabbit IgG (Green) (Catalog # BA1127) was used as secondary antibody. The section was counterstained with DAPI (Catalog # AR1176) (Blue).