

Basic Information

| | | |
|--------------------|--------------------------------------------------------------------------------------------------------------------------------------------------------------------------------------------------------------------------------------------------------------------------------------------------------------------------------------------------------------|--|
| Product Name | Anti-2B4/CD244 Antibody | |
| Gene Name | CD244 | |
| Source | Rabbit | |
| Clonality | Polyclonal | |
| Isotype | IgG | |
| Species Reactivity | mouse, rat | |
| Tested Application | WB, IHC, ELISA | |
| Contents | 500 ug/ml antibody with PBS, 0.02% NaN ₃ , 1 mg/ml BSA and 50% glycerol. | |
| Immunogen | E.coli-derived mouse 2B4/Cd244 recombinant protein (Position: Q20-N374). | |
| Concentration | 500 ug/ml | |
| Purification | Immunogen affinity purified. | |
| Observed MW | 65-75 kDa | |
| Dilution Ratios | Western blot (WB): 1:500-2000 Immunohistochemistry (IHC): 1:50-400 Enzyme linked immunosorbent assay (ELISA): 1:100-1000 (Boiling the paraffin sections in 10mM citrate buffer,pH6.0,or PH8.0 EDTA repair liquid for 20 mins is required for the staining of formalin/paraffin sections.) Optimal working dilutions must be determined by end user. | |

Storage

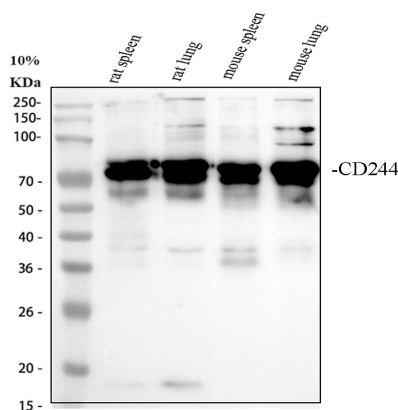
12 months from date of receipt, -20°C as supplied.

Background Information

CD244(Cluster of Differentiation 244) is a human protein encoded by the CD244 gene. It is also known as Natural Killer Cell Receptor 2B4. Tangye et al.(1999) mapped the 2B4 gene to 1q22. Suzuki et al.(2008) identified a functional single-nucleotide polymorphism(SNP) in the CD244 gene that contributes to rheumatoid arthritis susceptibility. Functional analysis by Boles et al.(1999) demonstrated that engagement of 2B4 with specific antibody activates NK cytolytic activity. Using recombinant human NK cell-activating ligand 2B4 fused to domains 3 and 4 of rodent Cd4 and flow cytometric analysis, Brown et al.(1998) demonstrated that CD48 binds to 2B4. Watzl et al.(2000) showed that antibody-mediated cross-linking of 2B4 leads to its rapid tyrosine phosphorylation, which is necessary for 2B4-mediated killer cell

activity.

Selected Validation Data



Western blot analysis of 2B4/CD244 using anti-2B4/CD244 antibody (A02527-1). The sample well of each lane was loaded with 30 ug of sample under reducing conditions.

Lane 1: rat spleen tissue lysates,

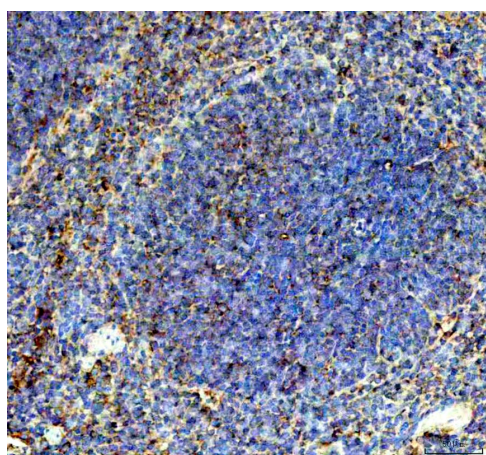
Lane 2: rat lung tissue lysates,

Lane 3: mouse spleen tissue lysates,

Lane 4: mouse lung tissue lysates.

After electrophoresis, proteins were transferred to a membrane.

Then the membrane was incubated with rabbit anti-2B4/CD244 antigen A03957-Aen affinity purified polyclonal antibody (A02527-1) at a dilution of 1:1000 and probed with a goat anti-rabbit IgG-HRP secondary antibody (Catalog # BA1054). The signal is developed using ECL Plus Western Blotting Substrate (Catalog # AR1197). A specific band was detected for 2B4/CD244 at approximately 65-75 kDa. The expected band size for 2B4/CD244 is at 42 kDa.



IHC analysis of 2B4/CD244 using anti-2B4/CD244 antibody (A02527-1).

2B4/CD244 was detected in a paraffin-embedded section of mouse spleen tissue. The tissue section was incubated with rabbit anti-2B4/CD244 Antibody (A02527-1) at a dilution of 1:200 and developed using HRP Conjugated Rabbit IgG Super Vision Assay Kit (Catalog # SV0002) with DAB (Catalog # AR1027) as the chromogen.