

Basic Information

Product Name	Anti-ATG3 Antibody
Gene Name	ATG3
Source	Rabbit
Clonality	Polyclonal
Isotype	IgG
Species Reactivity	human, mouse, monkey
Tested Application	WB
Contents	500 ug/ml antibody with PBS, 0.02% NaN ₃ , 1 mg/ml BSA and 50% glycerol.
Immunogen	E.coli-derived human Apg3 recombinant protein (Position: M1-T244). Human Apg3 shares 96.7% and 96.3% amino acid (aa) sequence identity with mouse and rat Apg3, respectively.
Concentration	500 ug/ml
Purification	Immunogen affinity purified.
Observed MW	38 kDa
Dilution Ratios	Western blot (WB):1:500-2000

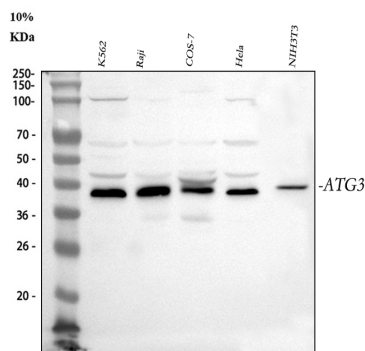
Storage

12 months from date of receipt, -20°C as supplied.

Background Information

This ATG3 gene encodes a ubiquitin-like-conjugating enzyme and is a component of ubiquitination-like systems involved in autophagy, the process of degradation, turnover and recycling of cytoplasmic constituents in eukaryotic cells. And the protein is known to play a role in regulation of autophagy during cell death. A pseudogene of this gene is located on chromosome 20. Alternative splicing results in multiple transcript variants encoding different isoforms.

Selected Validation Data



Western blot analysis of ATG3 using anti-ATG3 antibody (A01768-1).

The sample well of each lane was loaded with 30 ug of sample under reducing conditions.

Lane 1: human K562 whole cell lysates,

Lane 2: human Raji whole cell lysates,

Lane 3: monkey COS-7 whole cell lysates,

Lane 4: human Hela whole cell lysates,

Lane 5: mouse NIH/3T3 whole cell lysates.

After electrophoresis, proteins were transferred to a membrane.

Then the membrane was incubated with rabbit anti-ATG3 antigen

affinity purified polyclonal antibody (A01768-1) at a dilution of

1:1000 and probed with a goat anti-rabbit IgG-HRP secondary

antibody (Catalog # BA1054). The signal is developed using ECL Plus

Western Blotting Substrate (Catalog # AR1197). A specific band was

detected for ATG3 at approximately 36-40 kDa. The expected band

size for ATG3 is at 36 kDa.