

Basic Information

Product Name	Anti-NPC2 Antibody	
Gene Name	NPC2	
Source	Rabbit	
Clonality	Polyclonal	
Isotype	IgG	
Species Reactivity	human	
Tested Application	WB, IHC	
Contents	500 ug/ml antibody with PBS, 0.02% NaN3, 1 mg/ml BSA and 50% glycerol.	
Immunogen	A synthetic peptide corresponding to a sequence at the C-terminus of human Niemann Pick C2, which shares 79.4% and 76.5% amino acid (aa) sequence identity with mouse and rat Niemann Pick C2, respectively.	
Concentration	500 ug/ml	
Purification	Immunogen affinity purified.	
Observed MW	16-19 kDa	
Dilution Ratios	Western blot (WB):	1:500-2000
	Immunohistochemistry (IHC):	1:50-400
	(Boiling the paraffin sections in 10mM citrate buffer,pH6.0,or PH8.0 EDTA repair liquid for 20 mins is required for the staining of formalin/paraffin sections.) Optimal working dilutions must be determined by end user.	

Storage

12 months from date of receipt, -20°C as supplied.

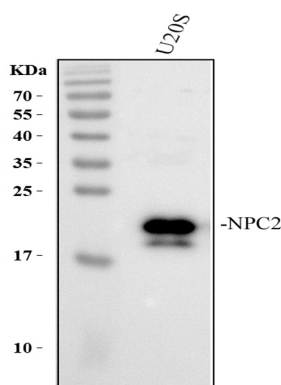
Background Information

NPC2 is a protein associated with Niemann-Pick disease, type C. This gene is mapped to chromosome 14q24.3. It encodes a protein containing a lipid recognition domain. The encoded protein may function in regulating the transport of cholesterol through the late endosomal/lysosomal system. Mutations in this gene have been associated with Niemann-Pick disease, type C2 and frontal lobe atrophy.

Reference

Anti-NPC2 Antibody被引用在1文献中。

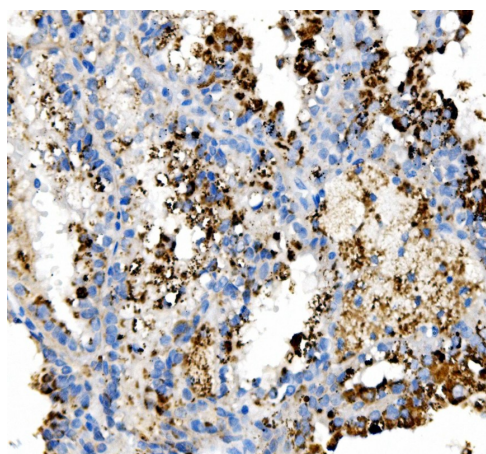
Selected Validation Data



Western blot analysis of NPC2 using anti-NPC2 antibody (A01582-2). The sample well of each lane was loaded with 30 ug of sample under reducing conditions.

Lane 1: human U2OS whole cell lysates.

After electrophoresis, proteins were transferred to a membrane. Then the membrane was incubated with rabbit anti-NPC2 antigen A03957-Aen affinity purified polyclonal antibody (A01582-2) at a dilution of 1:1000 and probed with a goat anti-rabbit IgG-HRP secondary antibody (Catalog # BA1054). The signal is developed using ECL Plus Western Blotting Substrate (Catalog # AR1197). A specific band was detected for NPC2 at approximately 16-19 kDa. The expected band size for NPC2 is at 17 kDa.



IHC analysis of NPC2 using anti-NPC2 antibody (A01582-2). NPC2 was detected in a paraffin-embedded section of human renal cancer tissue. The tissue section was incubated with rabbit anti-NPC2 Antibody (A01582-2) at a dilution of 1:200 and developed using HRP Conjugated Rabbit IgG Super Vision Assay Kit (Catalog # SV0002) with DAB (Catalog # AR1027) as the chromogen.