

## Basic Information

<b>Product Name</b>	Anti-Cyclin B1/CCNB1 Antibody	
<b>Gene Name</b>	CCNB1	
<b>Source</b>	Rabbit	
<b>Clonality</b>	Polyclonal	
<b>Isotype</b>	IgG	
<b>Species Reactivity</b>	human, mouse, rat	
<b>Tested Application</b>	WB, IHC, FCM, ICC/IF, ELISA	
<b>Contents</b>	500 ug/ml antibody with PBS, 0.02% NaN3, 1 mg/ml BSA and 50% glycerol.	
<b>Immunogen</b>	E.coli-derived human Cyclin B1/CCNB1 recombinant protein (Position: M1-L383).	
<b>Concentration</b>	500 ug/ml	
<b>Purification</b>	Immunogen affinity purified.	
<b>Observed MW</b>	55 kDa	
<b>Dilution Ratios</b>	Western blot (WB):	1:500-2000
	Immunohistochemistry (IHC):	1:50-400
	Immunocytochemistry/Immunofluorescence (ICC/IF):	1:50-400
	Flow Cytometry (Fixed):	1:50-200
	Enzyme linked immunosorbent assay (ELISA):	1:100-1000
	(Boiling the paraffin sections in 10mM citrate buffer,pH6.0,or PH8.0 EDTA repair liquid for 20 mins is required for the staining of formalin/paraffin sections.) Optimal working dilutions must be determined by end user.	

## Storage

12 months from date of receipt, -20°C as supplied.

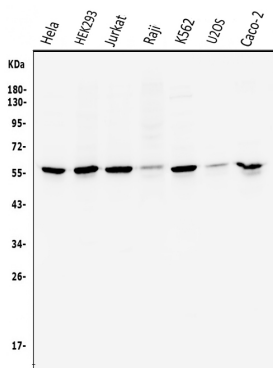
## Background Information

G2/mitotic-specific cyclin-B1 is a protein that in humans is encoded by the CCNB1 gene. It is mapped to 5q13.2. The protein encoded by this gene is a regulatory protein involved in mitosis. The gene product complexes with p34(cdc2) to form the maturation-promoting factor (MPF). The encoded protein is necessary for proper control of the G2/M transition phase of the cell cycle.

## Reference

Anti-Cyclin B1/CCNB1 Antibody 被引用在9文献中。

## Selected Validation Data



Western blot analysis of Cyclin B1/CCNB1 using anti-Cyclin B1/CCNB1 antibody (A00745-1). The sample well of each lane was loaded with 30 ug of sample under reducing conditions.

Lane 1: Human HELA whole cell lysates,

Lane 2: Human HEK293 whole cell lysates,

Lane 3: Human Jurkat whole cell lysates,

Lane 4: Human Raji whole cell lysates,

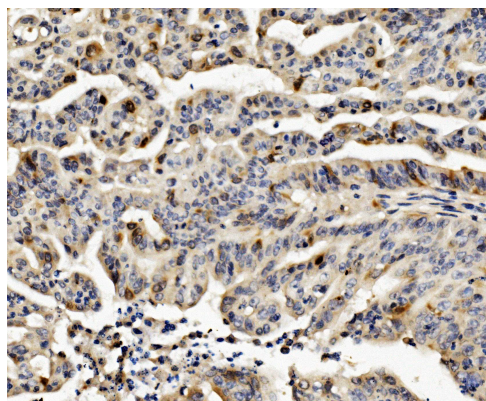
Lane 5: Human K562 whole cell lysates,

Lane 6: Human U2OS whole cell lysates,

Lane 7: Human CACO-2 whole cell lysates.

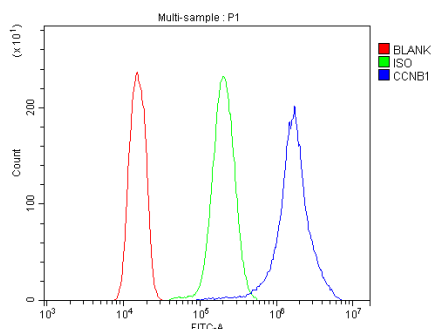
After electrophoresis, proteins were transferred to a membrane.

Then the membrane was incubated with rabbit anti-Cyclin B1/CCNB1 antigen affinity purified polyclonal antibody (A00745-1) at a dilution of 1:1000 and probed with a goat anti-rabbit IgG-HRP secondary antibody (Catalog # BA1054). The signal is developed using ECL Plus Western Blotting Substrate (Catalog # AR1197). A specific band was detected for Cyclin B1/CCNB1 at approximately 55 kDa. The expected band size for Cyclin B1/CCNB1 is at 48 kDa.



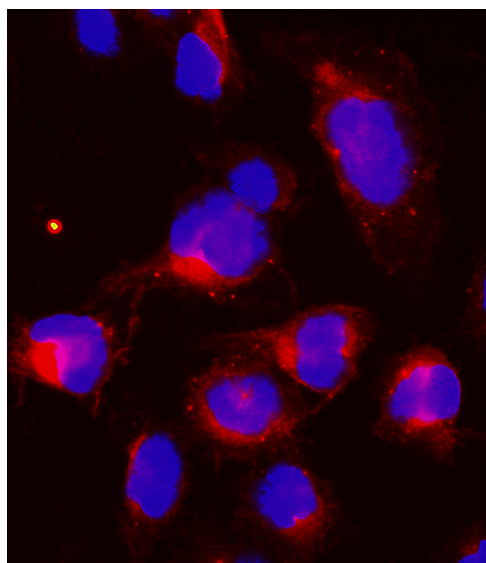
IHC analysis of Cyclin B1/CCNB1 using anti-Cyclin B1/CCNB1 antibody (A00745-1).

Cyclin B1/CCNB1 was detected in a paraffin-embedded section of human rectal cancer tissue. Biotinylated goat anti-rabbit IgG was used as secondary antibody. The tissue section was incubated with rabbit anti-Cyclin B1/CCNB1 Antibody (A00745-1) at a dilution of 1:200 and developed using Streptavidin-Biotin-Complex (SABC) (Catalog # SA1022) with DAB (Catalog # AR1027) as the chromogen.



Flow Cytometry analysis of A431 cells using anti-Cyclin B1/CCNB1 antibody (A00745-1).

Overlay histogram showing A431 cells stained with A00745-1 (Blue line). To facilitate intracellular staining, cells were fixed with 4% paraformaldehyde and permeabilized with permeabilization buffer. The cells were blocked with 10% normal goat serum. And then incubated with rabbit anti-Cyclin B1/CCNB1 Antibody (A00745-1) at 1:100 dilution for 30 min at 20°C. Fluoro488 conjugated goat anti-rabbit IgG (BA1127) was used as secondary antibody at 1:100 dilution for 30 minutes at 20°C. Isotype control antibody (Green line) was rabbit IgG at 1:100 dilution used under the same conditions. Unlabelled sample without incubation with primary antibody and secondary antibody (Red line) was used as a blank control.



ICC/IF analysis of Cyclin B1/CCNB1 using anti-Cyclin B1/CCNB1 antibody (A00745-1).

Cyclin B1/CCNB1 was detected in an immunocytochemical section of U2OS cells. The section was incubated with rabbit anti-Cyclin B1/CCNB1 Antibody (A00745-1) at a dilution of 1:100. Fluoro594-conjugated Anti-rabbit IgG Secondary Antibody (red)(Catalog#BA1142) was used as secondary antibody. The section was counterstained with DAPI (Catalog # AR1176) (Blue).